

2022-23 Adopted Budget

Prepared by the District 191 Business Office
200 W. Burnsville Pkwy.
Burnsville, MN 55337
952-707-2050

TO: Members, Board of Education
Dr. Theresa Battle, superintendent

FROM: Lisa Rider, executive director of business services

DATE: June 9, 2022

RE: Approve FY 2022-2023 Adopted Budget

RECOMMENDATION: That the Board of Education approves the 2022-23 Adopted Budget providing all funds' revenues of \$182,328,209 and all funds' expenditures of \$183,385,992.

Below is a summary of the proposed 2022-2023 Adopted Budget for your review. A full summary of the General Fund budget units and the assigned staffing are attached for review prior to action for adoption at the board meeting on June 16, 2022.

FUND	REVENUE BUDGET	EXPENDITURE BUDGET	INCR (DECR) TO FUND BALANCE
GENERAL	\$ 135,328,560	\$ 137,139,540	\$ (1,810,980)
FOOD SERVICE	5,164,842	5,190,762	(25,920)
COMMUNITY SERVICE	6,464,450	5,740,690	723,760
CAPITAL PROJECTS	-	-	-
DEBT SERVICE	10,875,000	9,970,000	905,000
INTERNAL SERVICE FUND	24,495,357	25,345,000	(849,643)
TOTAL ALL FUNDS	\$ 182,328,209	\$ 183,385,992	\$ (1,057,783)

The 2022-2023 Budget was prepared in accordance with the following Board of Education decisions. The parameters used to develop the budget are detailed in the presentation materials and are essentially as follows:

1. General education funding, on a per pupil basis, was increased to \$6,863 per adjusted pupil unit.
2. Elementary class sizes district-wide averaging 25.5:1 (resulting from a range of class sizes of 20-32 depending upon grade level) and secondary class sizes averaging around 28 students per teacher general allocation with these numbers decreasing when school within a school, special education, multilingual learners, compensatory and base positions such as counselors, deans, nurses and social workers are included.

3. In addition, ESSER III funds have been used to add teachers and support staff which reduce the ratio of students to teachers even more.
4. Enrollment decreased with estimates based on projected end of year Early Childhood through grade 12 average daily membership of 7,681 for 2021-2022 Revised Budget and 7,453 for 2022-2023, a decrease of 228 average daily memberships.
5. An estimated \$529,083 reduction in Health Insurance costs across the operating funds is included as a result of the OPEB Trust implicit rate contributions.
6. There is a 6.5% increase in 2022-2023 health insurance premium costs for self-insured employee health benefits, and a 0.5% increase in 2022-2023 dental insurance premium costs.
7. The projected Unassigned Fund Balance for the General Fund is 12.67% and includes restricted and committed fund balances in the areas of: Area Learning Center, Student Activities, Capital, program carryover, Facilities Rental, and ProPay. This projected Unassigned Fund Balance is above the defined minimum unassigned general fund balance of 8% of general fund expenditures as outlined in board policy 714. The FY23 projected Unassigned Fund Balance reflects a reduction in fund balance due to expenditures exceeding revenues by \$1,810,980. It is anticipated a portion of the FY22 Audited Fund Balance will be Assigned to assist in the coverage of this anticipated use of fund balance.

This adopted budget will be revised later in the 2022-2023 year to adjust for actual data relating to Federal Relief Funds for FY22 and FY23 impacts as known, federal updates, enrollment, staffing, audited fund balances, etc.

GENERAL FUND

Overview

This budget utilizes the option of spending down the existing fund balance over the option of reducing expenditures potentially impacting programming that is critical to the execution of Vision One91.

Following is a list of the most significant assumptions used in developing the revenue budget:

Basic Allowance

The basic funding allowance is \$6,863 per pupil unit.

Federal Relief Funds

This General Fund budget reflects the inclusion of ESSER III funds in the amount of \$6,345,813 for activities within the school year and school day. ESSER III funds in the amount of \$1,614,153 for activities outside of the school day and school year. \$1,545,163 for summer programming. \$35,000 for tutoring, and \$130,470 from the Pandemic Relief Funds. Adjustment to the amount of federal funds to be used in FY22 will be made in revisions to the budget planned for January 2023.

Special Education

Special education categorical aid has been adjusted considering the special education funding and will continue to be monitored for needed adjustments at budget revision. This is an area of particular concern as there continues to be the cross-subsidy need for special education services.

Referendum

The district's referendum authority of 2022-2023 is a combined \$1,881 per adjusted pupil unit prior to local optional allowance of \$424 reflecting the equivalent amounts approved by the voters in November 2019. Total referendum revenue adjusts each year in direct proportion to adjusted pupil units served. Estimated referendum revenue, including the local optional allowance, for the 2022-2023 year is approximately \$20 million, or roughly 14.84% of the total General Fund revenues.

Alternative Teacher Compensation

Alternative Teacher Compensation revenue of approximately \$1.985 million is included in the 2022-2023 budget per the ProPay plan between the Board of Education and Burnsville Education Association.

Compensatory and English Learners

Compensatory and English Learner revenue has decreased just over \$1 million as a result of the Fall 2021 enrollment demographics. FY23 adopted budget includes \$8.6 million. A priority is placed on covering costs of English Learner staff at all buildings. The degree of services needed by English Learners vary and our assessment of students and the responding services will fluctuate. The remainder of this funding continues to be dedicated to providing educational programs for at risk students through various district initiatives. This area continues to require cross subsidy to fully meet the needs of our English Learners.

Enrollment

Enrollment is a crucial factor in determining a school district's revenue because most funding formulas are student based. Both the closure of schools and the COVID-19 impact has been considered in determining the enrollment estimate use for the 2022-2023 Adopted Budget. The 2022-2023 adopted budget assumes a decline in estimated EC-12 enrollment from an estimated 7,681 students (Average Daily Membership) in 2021-2022 to 7,453 in 2022-2023. Enrollment uncertainty creates the potential for significant increases or decreases in student-based revenue. This assumption will need to be re-evaluated when the October 1, 2022, enrollment is known and the retention factor for 2022-2023 is determined. With each student generating approximately \$12,189 in revenue, a small deviation in enrollment can produce a significant change in revenue.

Revenue Restrictions

Restrictions on the use of general education revenue are offset with dedicated revenue. The following are restrictions imposed on general education revenue in 2022-2023:

Basic Skills (Compensatory, English Learners)	Operating Capital
Learning & Development	Area Learning Center
Gifted & Talented	Alternative Teacher Compensation
Achievement and Integration	Long-Term Facility Maintenance
Staff Development	All Federal Relief Funds

Operating Capital Expenditures

Operating Capital expenditures are budgeted in the General Fund but are supported by revenue that is dedicated to this purpose. Operating Capital expenditures included in this budget amount to approximately \$2.3 million. Every effort will be made to maximize the use of the capital funds over general funds where possible.

Long-Term Facilities Maintenance Revenue

Since 2016-2017, the Long-Term Facilities Maintenance Revenue of \$2.4 that rolls together the health and safety and the alternative facility projects is utilized within the general fund for health and safety and deferred maintenance projects. Both revenue and expenditures for projects must be recorded in the general fund for any projects funded by the Long-Term Facilities Maintenance Revenue.

Technology Capital Projects

The Capital Tech Levy, originating in 2016-2017 school year generates approximately \$3.6 million annually for the purpose of technology within our district. These funds have allowed our technology budget to increase to just over \$5.6 million. This levy placed in a very favorable position to be able to respond to our student needs digitally throughout the pandemic.

Student Transportation

The student transportation budget is based on anticipated normal service levels and reflects the most recent contract entered into with Schmitt and Sons, including a 6% rate increase in 2022-2023 per the contract.

Site Based Budgeting

The closure of two elementary buildings and one middle school has been incorporated in the site-based budgeting. The addition of our Virtual Academy has been incorporated as additional sites within the FY23 adopted budget. A large portion of the operating budget is expended at the site level based on ranges of class sizes determined by Principals and other Administrators in the staffing process. Instructional budgets, while determined on a uniform basis across the district, are distributed among various accounts and programs at the school building level. Limited unspent budget balances at the end of a year in school accounts are carried forward to the succeeding year provided the Board continues to commit the related fund balance.

FOOD SERVICE

The Food Service Fund budget shows a slight decrease to fund balance estimated at (\$25,920) for the 2022-2023 year. The Summer Food Service Program will end prior to the start of next school year. We will return to the National School Breakfast and Lunch Program for the 2022-2023 school year. Meals will be served and charged to families based upon eligibility. It is extremely important for our families to apply for the Educational Application Benefits to ensure their eligibility is considered when charging meals. Student Meal prices will be \$0.50 for milk; Elementary lunch \$2.80 and breakfast \$1.60; Secondary lunch \$2.90 and breakfast \$1.60 with Adult meal prices being lunch \$4.15 and breakfast \$2.40. Additional Student second meals are charged at the Adult meal prices.

COMMUNITY EDUCATION

The Community Service Fund shows an increase to the fund balance of \$723,760. Community Education has been designing programs and offerings around a population that has fewer discretionary dollars to spend and yet require greater services.

The Partners Achieving Learning Success (PALS) program and Burnsville Youth Collaborative (BYC) are deliberate programmatic options to provide access to high quality academic and enrichment experiences at no cost to participants. Voluntary Pre-Kindergarten (VPK) is yet another example of the response to an opportunity that puts students in classrooms for a quality learning experience at no cost to families. These programs during FY 2022-2023 are eligible for the use of federal relief funds for expenditures and this is anticipated to contribute to the increased fund balance as presented.

These and many other measures are aimed at providing access while acknowledging the need to ensure that the revenue stream can support the department as a whole and still provide high quality opportunities for our entire community.

CAPITAL BUILDING PROJECTS

The Capital Building Projects Fund that had held funds from the Vision One91 referendum building project are expected to be fully spent. These projects utilized the bond proceeds received in May, 2015 as a result of the Vision One91 referendum approval in February, 2015.

DEBT REDEMPTION

The Debt Redemption Fund is used to record revenues and expenses relating to principal and interest on bonded debt. These funds are dedicated to debt redemption and cannot be used for any other purpose.

FORMAT

Attached is the General Fund budget broken into budget units and a list of employees for each budget unit. This format will allow for a greater understanding of what is included in our entire General Fund budget.

SUMMARY

This budget was developed in accordance with direction provided by the Board of Education. This budget assumes a more normal learning approach for the 2022-2023 school year. There is potential for significant change as actual enrollment and staffing patterns are recognized. Our reality is that there are constant changes to staffing assignments as we adjust our staffing to best serve our student's needs. Therefore, much of the staffing details will change but overall the number of positions approved by the board to fulfill its' mission will remain within the guidelines of the proposed budget. The proposed adopted budget aligns with earlier projections.

Proposed FY23 Adopted Budget

Theresa Battle, superintendent
Lisa Rider, executive director of
business services
June 9, 2022



Overview

- » Provide Recommendation of Fiscal Year (FY) 2023 Proposed Adopted Budget to the Board



Agenda

- Recap of Board Values, Budget Development Goals, Strategies and Engagement Opportunities.
- Revised Budget: Revenues, Expenditures, Restrictions, People and Program.
- Gap in District Funding and Cross Subsidy.
- Federal Relief Funds Summary Update.
- Proposed FY23 Budget (Current Fund Balance):
 - General Fund, Food Service, Community Service Fund, and Debt Service.
- Next Steps

Board of Education Guiding Values

- Creating a school system that values diversity and serves the unique needs of our students, families and staff.
- Valuing the professionalism of our staff and their roles in serving our students and families.
- Working within our budget to ensure programs and services are sustainable.

Note: Established by board for negotiations with employee groups based on the district's mission of Each Student. Future Ready. Community Strong.

Budget Development Goals

Goals

- Be good stewards of taxpayer dollars.
- Align budget to strategic priorities.
- Include constituents' perspectives throughout the process.
- Be transparent about district processes and finances.
- Increase cross departmental collaboration.
- Present a structurally balanced budget.



Budget Development Strategies

Strategies

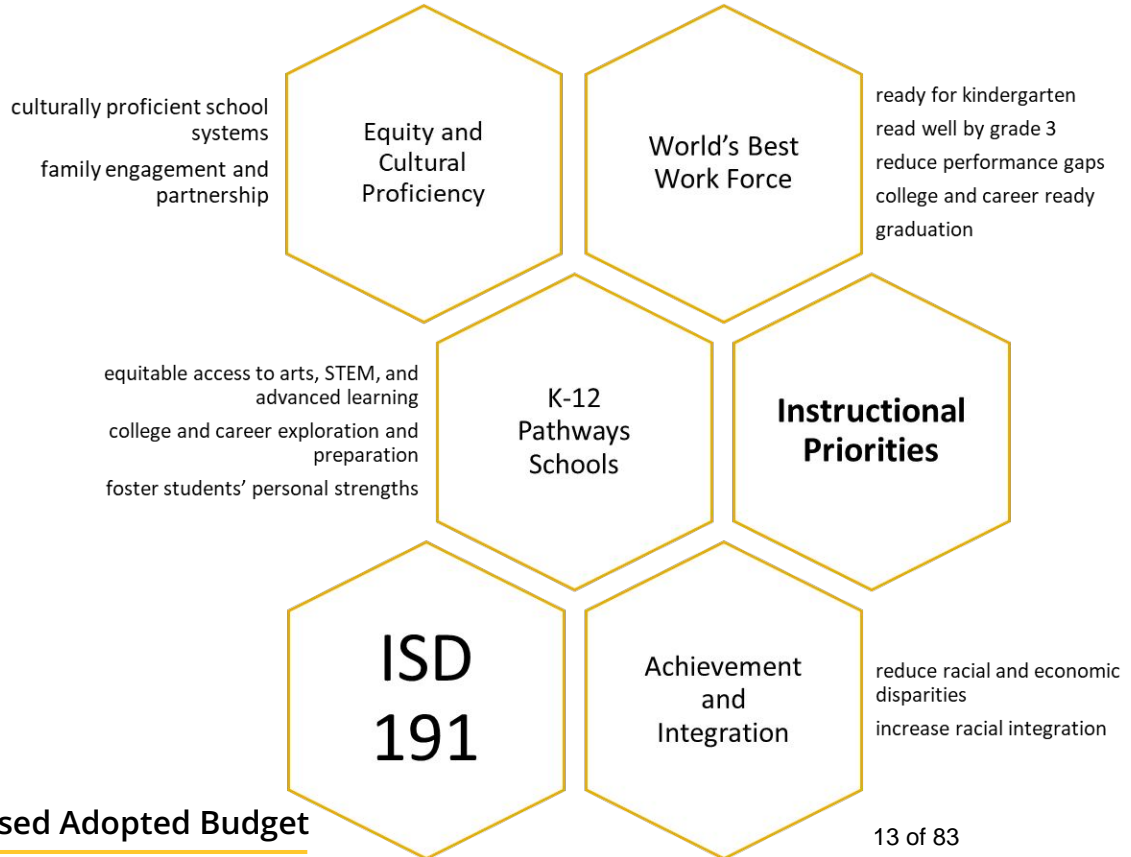
- Prioritize investment for instructional priorities, including PK-12 Pathways.
- Application of rightsizing.
- Preliminary adjustments - Identify opportunities to reduce spending.
- Strategic use of federal relief funding to equitably address the impact of the pandemic.
- (Board direction: FY23 50%, FY24 50%)
- Fund balance usage (Board direction)
 - Use no more than \$1.845 million of fund balance or Unassigned Fund Balance no lower than 14.11%.



Prioritizing our Instructional Priorities

Prioritize Instructional Priorities

- Federal Title Funding (I,II,III,IV,VI)
- Achievement & Integration
- Curriculum Capital
- General Funds
 - Professional Development
 - Curriculum
 - Assessment



Supporting our Priorities: External Grants

Total Grants

- Bosch Community Fund grant (rain/pollinator gardens at NMS/ERMS): \$17,000
 - Additional funding from Dakota and Scott County Soil & Water Conservation Districts: Up to \$30,000
- Dept of Labor and Industry grant (automotive internships): \$95,000
- MDE Universal Plus grant (elementary computer science): \$78,000
- Comprehensive Arts Planning Program (Perpich Center): \$10,000
- MDE Grow Your Own Student Grant (Education Pathway): \$441,708
- MDE Education Pathway Concurrent Enrollment Grant (Education Pathway): \$35,000
- MDE Expansion of Rigorous Course Opportunities (Early College/AA Degree Pathway): \$170,360
- MDE Minnesota Multi-tiered System of Supports: \$220,591

Engagement Opportunities

- February: Online survey summary, Somali parent meeting summary, Hispanic parent meeting summary.
- March: Staff virtual meetings, video presentation shared with families, multiple opportunities to provide feedback, online feedback survey open, community in-person meeting offered to all families and public.

2022-2023 Proposed Adopted Budget - All Funds

ISD 191 BURNSVILLE - EAGAN - SAVAGE 2022-2023 ADOPTED BUDGET CHANGES IN FUND BALANCE				
FUND	PROJECTED FUND BALANCE 6/30/22	REVENUE BUDGET	EXPENDITURE BUDGET	PROJECTED FUND BALANCE 6/30/23
GENERAL	\$ 29,371,898	\$ 135,328,560	\$137,139,540	\$ 27,560,918
FOOD SERVICE	2,021,710	5,164,842	5,190,762	1,995,790
COMMUNITY SERVICE	3,053,124	6,464,450	5,740,690	3,776,884
CAPITAL PROJECTS	-	-	-	-
DEBT SERVICE	5,838,714	10,875,000	9,970,000	6,743,714
INTERNAL SERVICE FUND	22,950,113	24,495,357	25,345,000	22,100,470
TOTAL ALL FUNDS	<u>\$ 63,235,559</u>	<u>\$ 182,328,209</u>	<u>\$183,385,992</u>	<u>\$ 62,177,776</u>

What restrictions are there?

General Fund Capital: Annual allocation that can only be used for approved personnel and equipment per state statute.

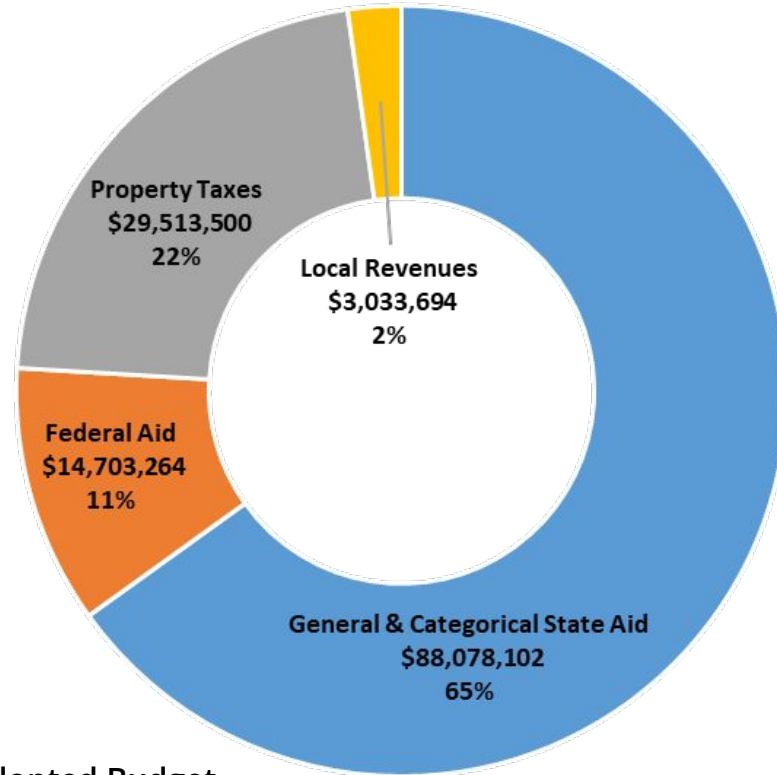
Title Funds: Federal money designated for specific purposes, such as needs associated with high poverty rates.

Technology Levy: Specifically for technology, personnel and equipment.

Food & Nutrition Services - Community Education - Debt Service

General Fund Revenue - \$135,328,560

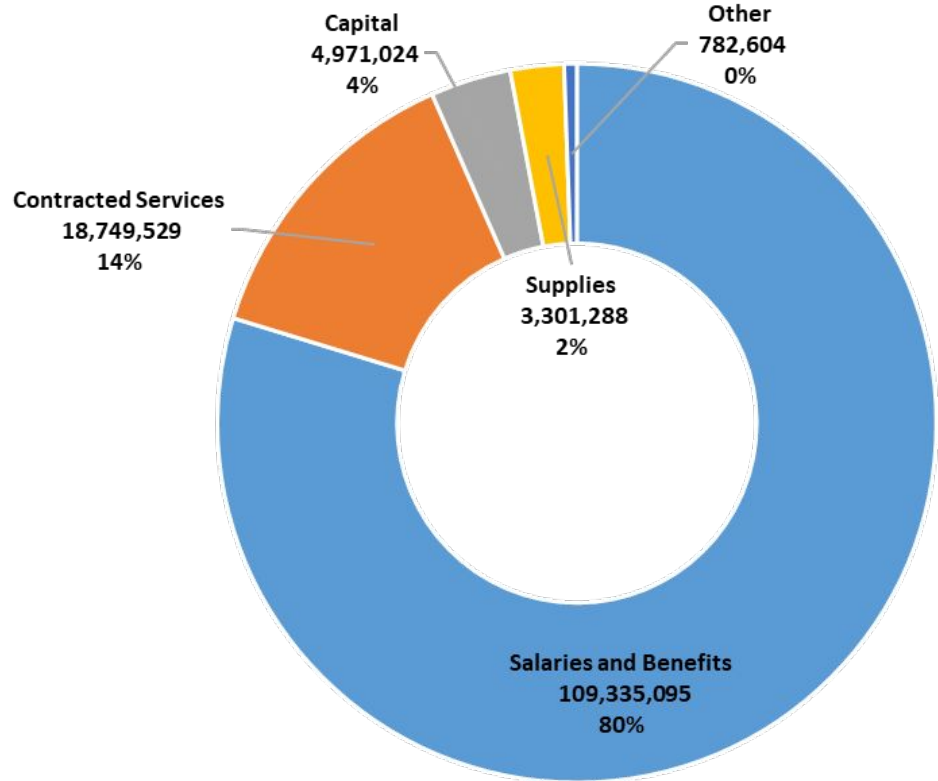
Revenue:
Where does it
come from?



General Fund Expenditures by Object - \$137,139,540

Spending: By Type of Expense

- 80% on people
- 20% on supplies, facilities, contracted services, etc.



People: By Bargaining Group General Fund

Projected salary and benefits FY23

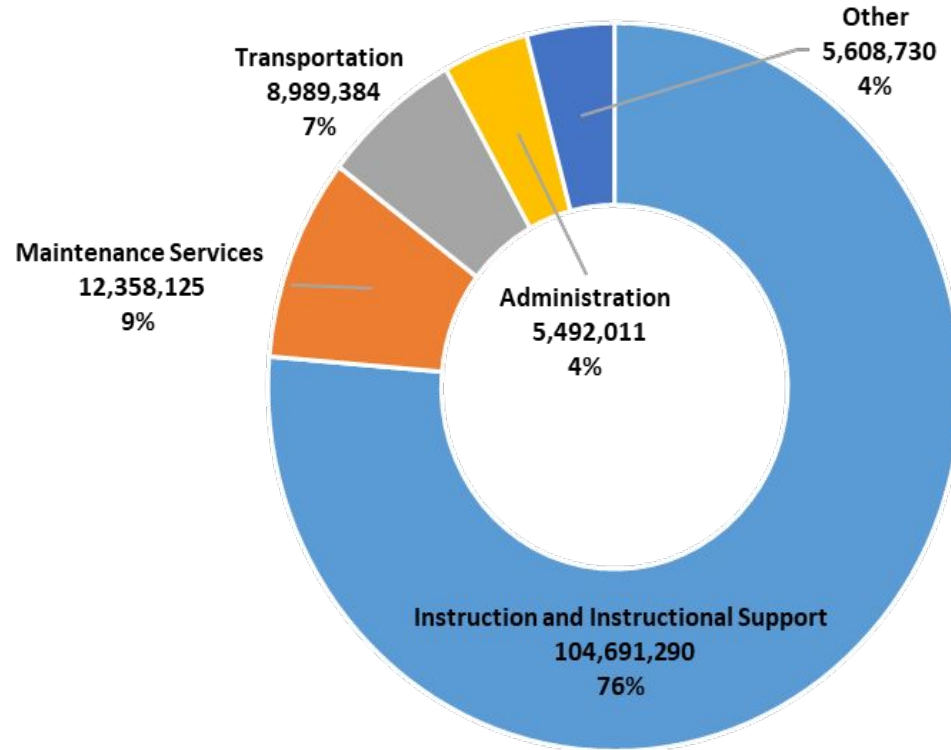
General Fund Bargaining Group	Sum of FTE (Full-Time Equivalent)	Sum of Salary	Sum of Benefits	Total Salary + Benefits	% of Total
Clerical	43.00	\$ 2,191,546	\$ 976,699	\$ 3,168,246	3.11%
Confidential	6.00	\$ 440,800	\$ 179,219	\$ 620,019	0.61%
Custodial	72.00	\$ 3,896,529	\$ 1,575,280	\$ 5,471,809	5.37%
District Wide	8.65	\$ 1,123,628	\$ 394,232	\$ 1,517,860	1.49%
Educational Asst	161.56	\$ 5,059,205	\$ 3,184,887	\$ 8,244,092	8.09%
Info Tech Specialists	13.00	\$ 781,455	\$ 322,686	\$ 1,104,141	1.08%
Operations	3.00	\$ 233,640	\$ 75,599	\$ 309,239	0.30%
Principals	18.00	\$ 2,620,750	\$ 890,034	\$ 3,510,784	3.45%
Superintendent	1.00	\$ 195,760	\$ 59,933	\$ 255,693	0.25%
Teachers	602.28	\$ 49,481,315	\$ 21,416,127	\$ 70,897,442	69.58%
Unaffiliated	50.30	\$ 3,648,622	\$ 1,601,296	\$ 5,249,918	5.15%
VPK / CE	25.21	\$ 1,169,990	\$ 378,742	\$ 1,548,732	1.52%
Grand Total	1,004.00	\$ 70,843,239	\$ 31,054,734	\$ 101,897,973	100%

[Burnsville-Eagan-Savage District #191 Bargaining Unit Descriptions](#)

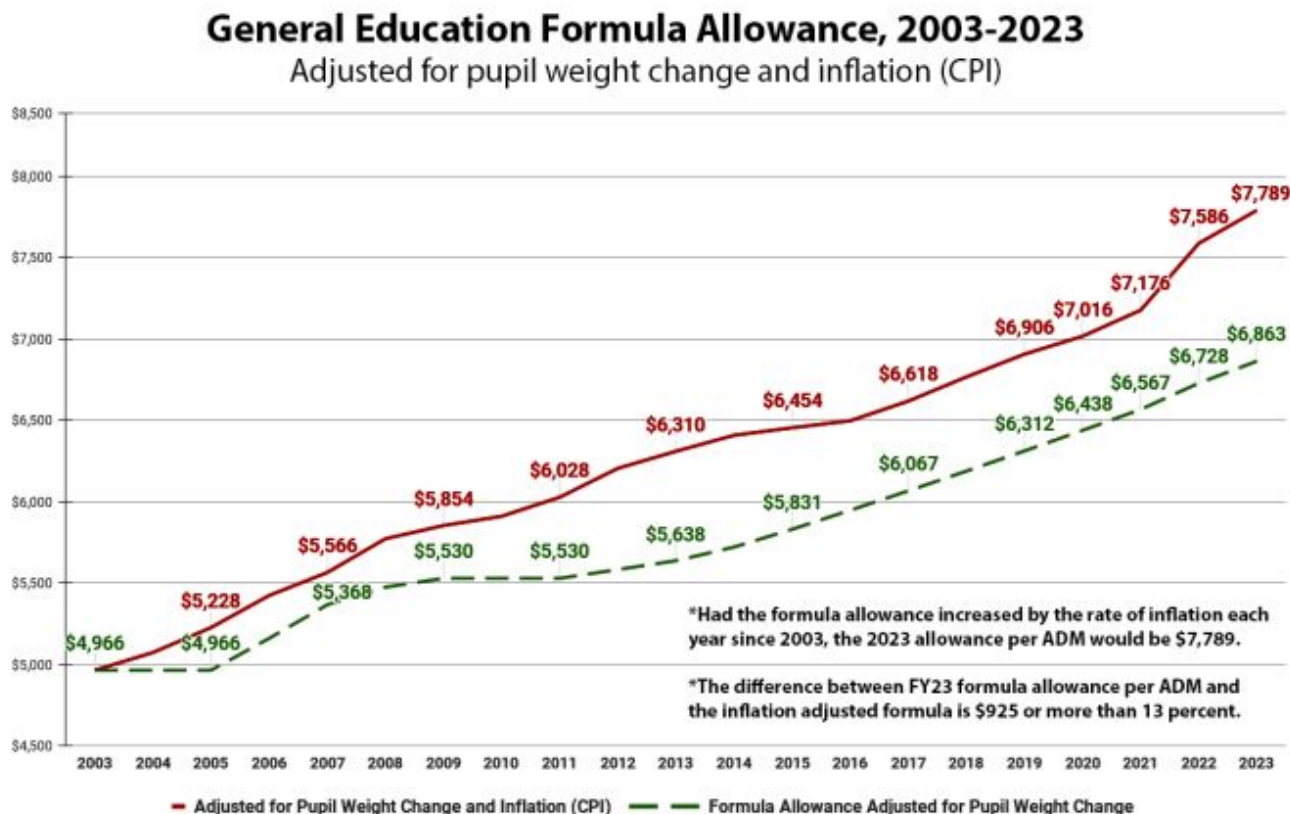
General Fund Expenditures by Program - \$137,139,540

Spending: By Purpose

- 76% on instruction & instructional support
- 4% on admin



General Education Formula - State Aid is lagging inflation



Source: MDE General Fund State Aid and Levy Revenues, 2006 to 2025: 2022 February Forecast

22 of 83

Updated April 22, 2022

General Education Formula - State Aid Numbers

- The General Education Formula generates for us 41.3% of our total General Fund Revenue in our Adopted FY23 Budget.
- General Education Formula increase of 2.0% increased the formula from \$6,728 to \$6,863 per pupil.
- Applying this increase with no change in enrollment from the prior year = \$1,134,270.
- \$1,134,270 is equal to 0.83% increase in all expenditures from FY 2022.
- Each year we must apply the increase with adjustments for our projected end of year enrollment.
- For ISD 191, due to our change in enrollment, our increase in revenue is \$663,836 of additional income which is equal to 0.49% increase in all expenditures from FY 2022.

Federal Relief Funds Included

General Fund 01

- Finance 160 \$ 6,345,813
- Finance 161 \$ 1,614,153
- Finance 163 \$ 1,545,163
- Finance 169 \$ 35,000
- Finance 171 \$ 130,470
- Total \$ 9,670,499

Federal Relief Funds ESSER III

Community Education Fund 04

- Finance 165 \$ 148,000

General Fund Budget Comparative Summary

General Fund Budget Comparative Summary

	Actual Results 2020-21	Adopted Budget 2021-22	Revised Budget 2021-22	Adopted Budget 2022-23
Total Beginning Fund Balance	\$ 20,326,027	\$ 21,483,321	\$ 29,521,880	\$ 29,371,898
Revenues	129,973,192	123,498,369	126,417,450	125,658,061
Federal Relief Revenues for current costs	4,673,195	7,187,245	9,468,267	3,400,000
Federal Relief Revenues for new costs				6,270,499
Expenditures	120,777,339	132,480,192	130,875,664	127,469,041
Federal Relief Expenditures for new costs	4,673,195	3,287,245	5,160,035	9,670,499
Variance (Revenues - Expenditures)	9,195,853	(5,081,823)	(149,982)	(1,810,980)
Total Ending Fund Balance	\$ 29,521,880	\$ 16,401,498	\$ 29,371,898	\$ 27,560,918
Breakdown of Fund Balance Categories				
Nonspendable	\$ 382,338	\$ 367,587	\$ 382,338	\$ 382,338
Restricted	9,020,782	5,476,553	8,261,908	8,637,897
Committed	1,849,491	1,784,069	1,538,385	1,168,634
Assigned	5,081,823	-	1,810,980	-
Unassigned	13,187,446	8,773,289	17,378,287	17,372,049
Total Ending Fund Balance	\$ 29,521,880	\$ 16,401,498	\$ 29,371,898	\$ 27,560,918
Unassigned Fund Balance %	10.51%	6.46%	12.77%	12.67%
Unassigned Fund Balance % if no Assigned			14.11%	

Reasons for decrease in unassigned fund balance

March 24, 2022 Board direction was to develop a budget with not more than a deficit of \$1,845,000 or to be at the 14.11% unassigned fund balance (Scenario 2).

We did show fund balance use of less than the \$1,845,000; however, the adjustments to the budget reflected savings in restricted fund balances more than anticipated and therefore our unassigned fund balance is less than the 14.11%.

An example of this is the adjustment for the capital funds within special education that were reduced and this increased the restricted capital funds instead of the unassigned fund balance.

Other Resources

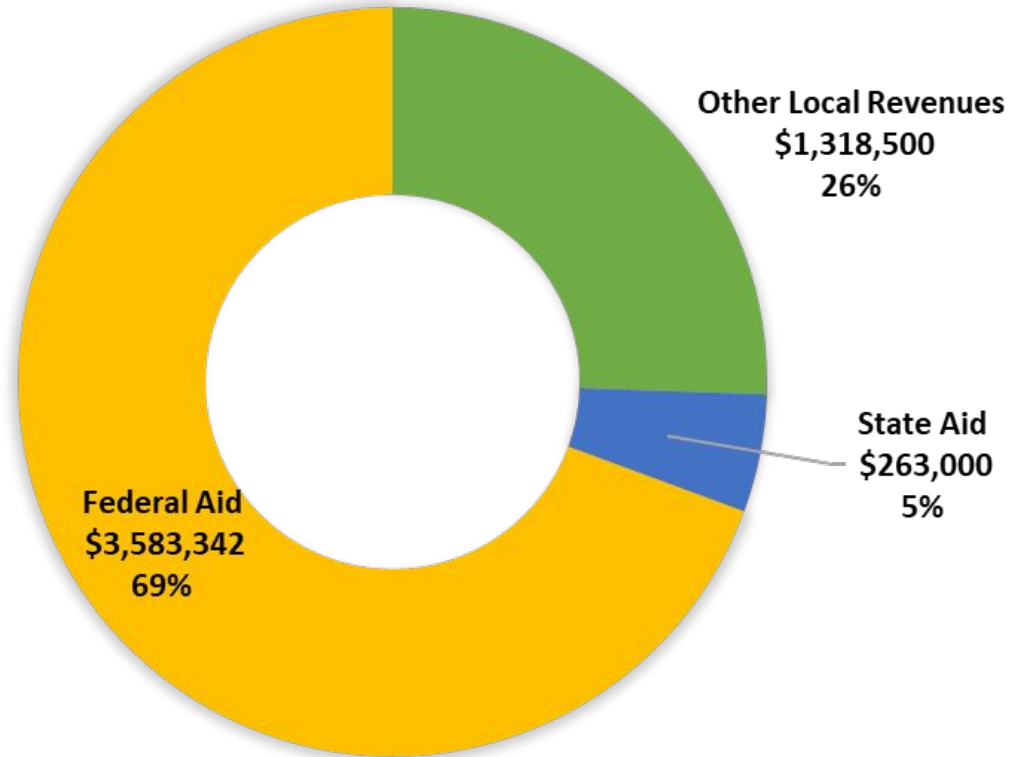
- [FY23 Adopted Budget - Budget Unit Summary Report](#)
- [FY23 Adopted Budget - Staffing by Budget Unit](#)

Food Service Fund

Projected Beginning Fund Balance 6/30/22	\$ 2,021,710
Revenues	\$ 5,164,842
Expenses	\$ 5,190,762
Net Change in Fund Balance	\$ (25,920)
Projected Ending Fund Balance 6/30/23	\$ 1,995,790

Food Service Fund Revenue - \$5,164,842

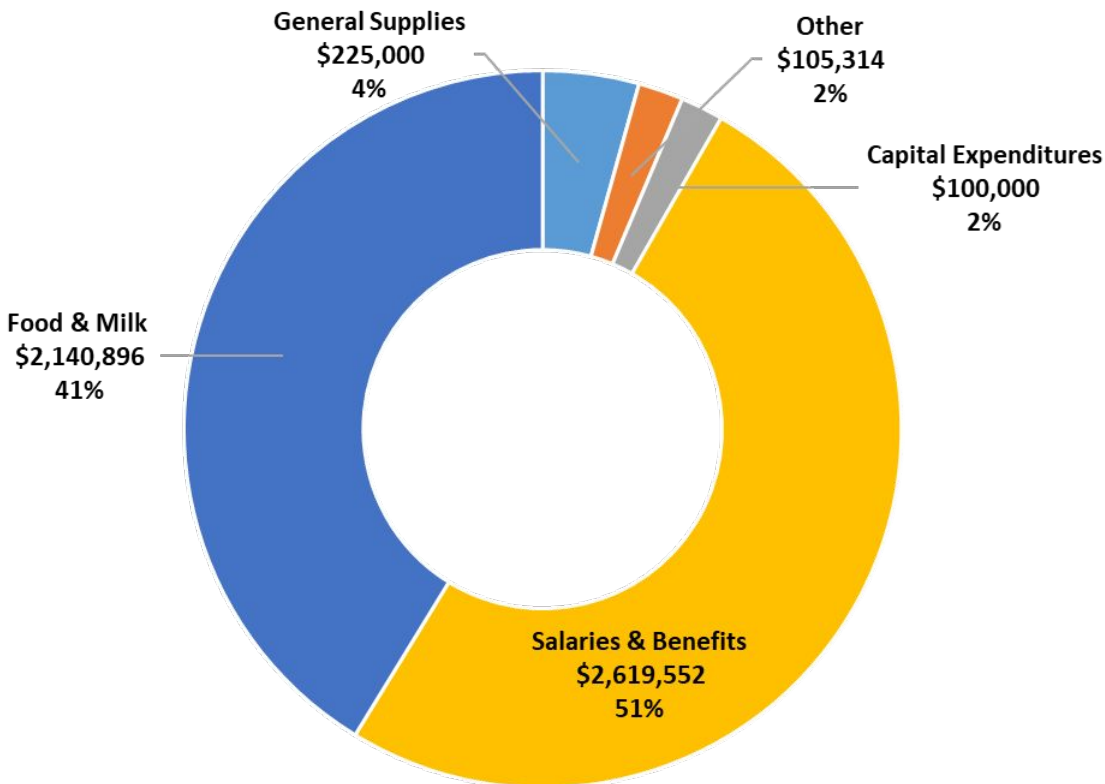
Revenue:
Where does
it come
from?



Food Service Fund Expenditures by Object - \$5,190,762

Spending:
By Type of
Expense

- 51% on people
- 49% on food, supplies, contracted services, etc.



Community Service Fund

Projected Beginning Fund Balance 6/30/22 \$ 3,053,124

Revenues \$ 6,464,450

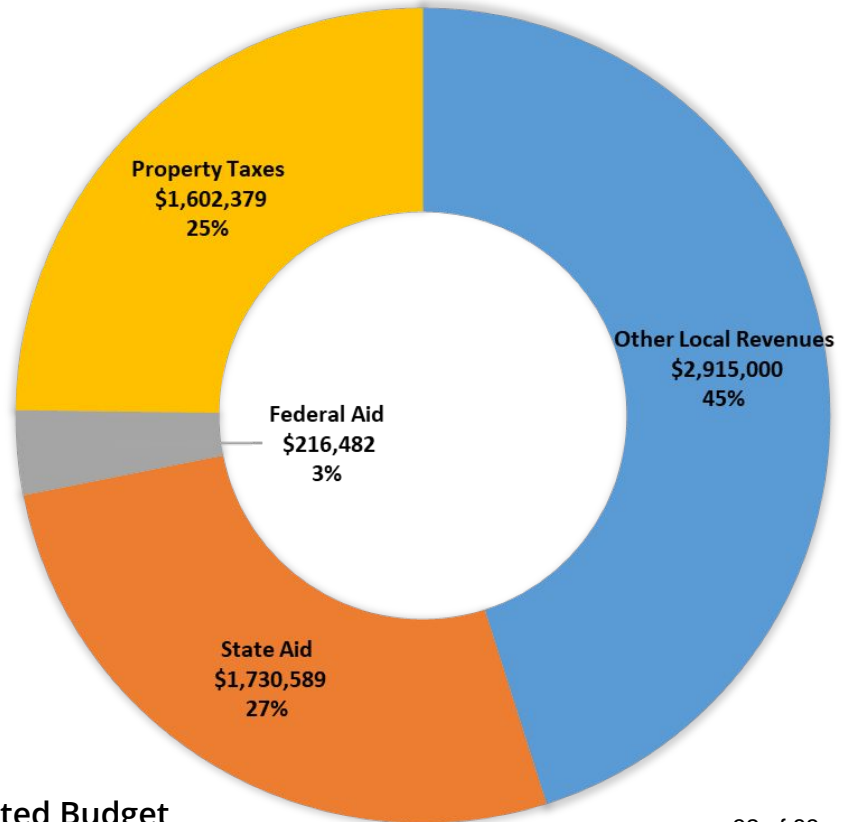
Expenses \$ 5,740,690

Net Change in Fund Balance \$ 723,760

Projected Ending Fund Balance 6/30/23 \$ 3,776,884

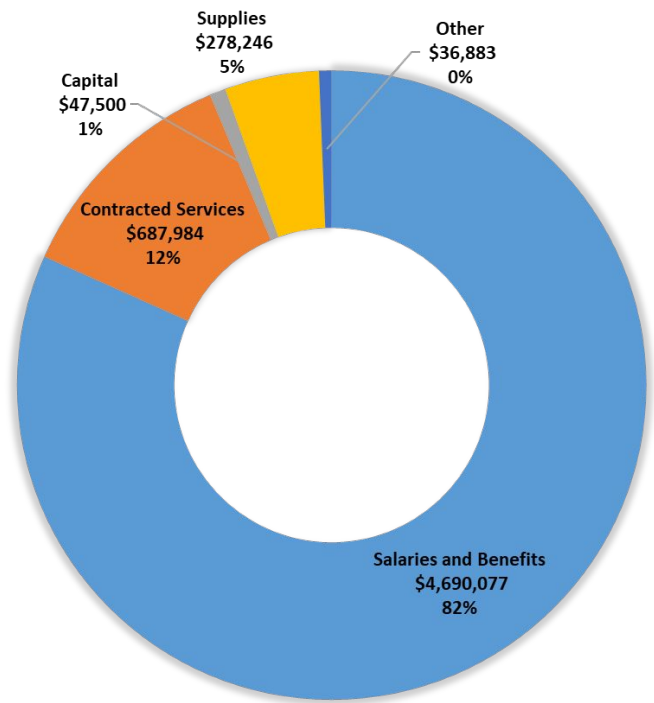
Community Service Revenue - \$6,464,450

Revenue:
Where does
it come
from?

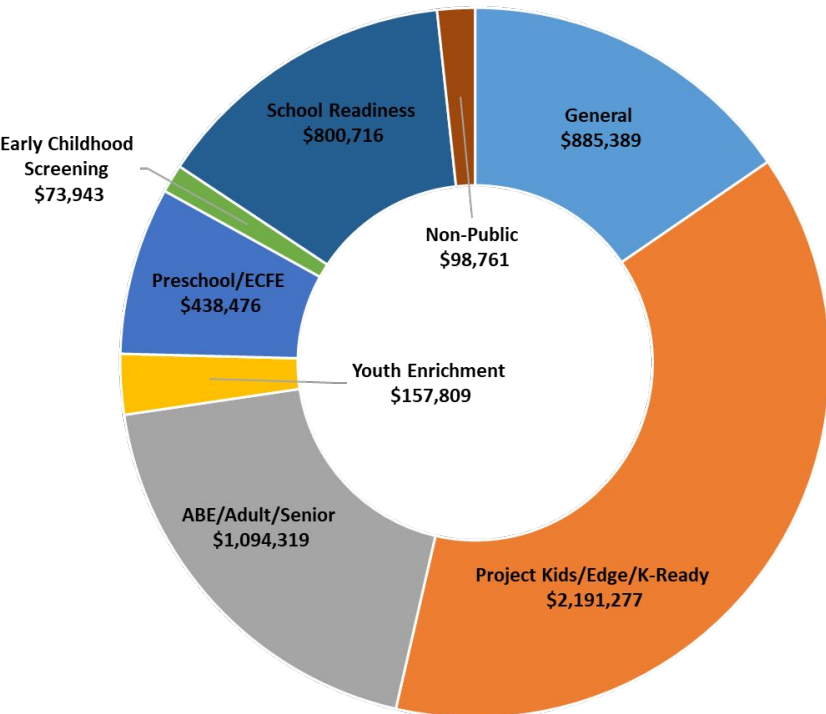


Community Service Expenditures - \$5,740,690

Spending: By Type of Expense



Spending: By Program



Debt Service Fund

Projected Beginning Fund Balance 6/30/22 \$ 5,838,714

Revenues \$ 10,875,000

Expenses \$ 9,970,000

Net Change in Fund Balance \$ 905,000

Projected Ending Fund Balance 6/30/23 \$ 6,743,714

Next Steps

June 16, 2022

Board Consideration of Recommendation to approve the
FY 2023 Budget, as presented.

*Thank
you*

2023 Adopted Budget by Budget Unit

(Staffing and budgeted Full-time Equivalent (FTE) as of May 23, 2022)

		Payroll Expenses	Non-Payroll Expenses	Adopted Budget	Adopted FTE's
01010	General Elementary Instruction Personnel	16,838,597	0	16,838,597	141.50
Provides the funding necessary to provide instruction in the core academic subjects of language arts, math, and social studies at the district's eight elementary schools.					
01030	General Elementary Instruction Subs	0	475,000	475,000	0.00
Provides the funding necessary for elementary substitutes.					
02010	General Middle School Instruction Personnel	4,969,893	0	4,969,893	37.90
Provides the funding necessary to offer courses in the core academic subjects of language arts, math, science, social studies, and world language at the district's three middle schools.					
02020	General Middle School Instruction Subs	51,500	150,000	201,500	0.00
Provides the funding necessary for middle school substitutes.					
03010	General High School Instruction Personnel	6,618,113	0	6,618,113	54.27
Provides the funding necessary to offer courses in the core academic subjects of language arts, math, science, social studies, and world language at the district's high school.					
03020	General High School Instruction Subs	30,900	120,000	150,900	0.00
Provides the funding necessary for high school substitutes.					

2023 Adopted Budget by Budget Unit

(Staffing and budgeted Full-time Equivalent (FTE) as of May 23, 2022)

		Payroll Expenses	Non-Payroll Expenses	Adopted Budget	Adopted FTE's
04010	PhyEd, Health, Art, Music Personnel	4,761,871	0	4,761,871	41.78
Provides the funding to provide K-12 physical education, 6-12 health, K-12 visual arts, K-12 general/vocal music, and 6-12 Instructional music instruction.					
05010	Long Term Subs	144,200	0	144,200	0.00
Provides the funding necessary for payment of Long Term Subs K-12.					
06000	Health Care Teacher	93,909	0	93,909	1.00
Provides the funding to operate the instructional program of health care.					
06010	Family and Consumer Science Instruction	719,716	0	719,716	7.16
Provides the funding to operate the instructional program of family and consumer science.					
06020	Trade and Industrial Education	461,304	0	461,304	3.82
Provides the funding to operate the instructional program of trade and industrial education.					
06030	Career and Tech General Education	116,571	0	116,571	0.90
Provides the funding for general career and tech education in a variety of career objectives.					
06040	Business and Office Education	419,982	0	419,982	4.00
Provides the funding to operate the instructional program of business and office education.					
06050	Partnerships	200,216	0	200,216	1.00
Provides the funding for Strategic Partnerships and Pathways and related efforts in connecting our students with community opportunities.					

2023 Adopted Budget by Budget Unit

(Staffing and budgeted Full-time Equivalent (FTE) as of May 23, 2022)

		Payroll Expenses	Non-Payroll Expenses	Adopted Budget	Adopted FTE's
06060	PostSecondary Tuition Career Tech	0	530,450	530,450	0.00
Provides the budget for secondary students to attend Career & Technical classes.					
06070	PostSecondary CIS PSEO	0	745,720	745,720	0.00
Provides the budget for secondary students to attend classes through the District's various University and College programs including college in the schools (CIS) and post-secondary enrollment options (PSEO).					
07010	K12 Media Services	750,135	0	750,135	7.75
Provides the funding to provide K-12 media services- media specialists and media educational assistants.					
07020	K12 Gifted and Talented	95,840	0	95,840	1.00
Provides the funding to provide for a gifted and talented instructor at each elementary school.					
07030	612 Guidance Services	1,081,025	0	1,081,025	11.00
Provides the funding to provide 6-12 guidance services.					
07040	912 Deans	735,610	0	735,610	7.00
Provides the funding to provide 6-12 Dean support.					
07060	English Second Language Learner	4,739,111	70,000	4,809,111	42.00
Provides funding for the district's K-12 English Second Language Learner program and includes salaries, benefits, and other instructional expenses.					

2023 Adopted Budget by Budget Unit

(Staffing and budgeted Full-time Equivalent (FTE) as of May 23, 2022)

		Payroll Expenses	Non-Payroll Expenses	Adopted Budget	Adopted FTE's
08010	Site Allocation of Instructional/Operational Resources	15,107	446,595	461,702	0.00
Provides the per pupil funding allocation for instructional and operational related expenses. This funding is intended to cover the costs of building level equipment repairs, purchase of general supplies, classroom supplies, telephone, etc.					
08020	Building Level Copier Leases	0	65,000	65,000	0.00
Provides the funding for the monthly lease costs of the main multi-functional device within each school.					
09010	Special Ed Salaries/Benefits	26,163,784	0	26,163,784	300.17
Provides funding for staff costs necessary to operate the Office of Student Support Services. Most, but not all of these expenditures, are either reimbursed with state or federal special education funds or are related to general education functions.					
09030	Special Ed Purchased Services	0	1,864,806	1,864,806	0.00
Provides funding for Student Support Services purchased services, supplies and equipment.					
09040	Special Ed Transportation	0	4,448,180	4,448,180	0.00
Required transportation, purchased services, supplies and equipment for students served by Student Support Services.					
10010	Alternative Learning Center	2,106,577	217,445	2,324,022	31.53
Provides categorical funds to operate the alternative high school, school within a school, extended day and extended year programs for elementary and middle school students.					

2023 Adopted Budget by Budget Unit

(Staffing and budgeted Full-time Equivalent (FTE) as of May 23, 2022)

		Payroll Expenses	Non-Payroll Expenses	Adopted Budget	Adopted FTE's
10030	K12 Nursing/Health Services	1,066,461	19,900	1,086,361	12.83
Provides funding to operate the district health services department including salaries, benefits and other operating expenses for the district school health offices. Certain FTEs may also be included in Special Ed Salaries, 09010.					
11010	Co-Curricular Activities (Non-Athletic)	258,640	0	258,640	0.00
Provides the funding to support co-curricular activities. These funds are supplemented through ticket sales, fund raising, donations, etc.					
11011	Student Activities	0	200,000	200,000	0.00
Provides funding to provide Student Activities. These funds are supplemented through fundraising and donations.					
11020	High School Interscholastic Athletics	891,709	415,682	1,307,391	2.00
Provides the funding to provide high school athletics. These funds are supplemented through ticket sales, fund raising, donations, etc.					
11021	Middle School Interscholastic Athletics	243,000	-	243,000.00	0.00
Provides the funding to provide middle school athletics. These funds are supplemented through ticket sales, fund raising, donations, etc. This budget unit consists of salaries and benefits for no FTEs					
12010	Title I, Part A Regular Improving Basic Programs	1,733,486	252,313	1,985,799	19.92
Provides funding to help ensure all children meet challenging state academic standards. Includes staffing, instructional, Supplemental Education Services and staff development expenses.					

2023 Adopted Budget by Budget Unit

(Staffing and budgeted Full-time Equivalent (FTE) as of May 23, 2022)

		Payroll Expenses	Non-Payroll Expenses	Adopted Budget	Adopted FTE's
12020	Title II, Part A Regular Teacher/Principal Training & Recruiting	454,125	34,939	489,064	3.20
Funding pays a portion of teacher and administrative salaries of highly qualified professionals working to improve student achievement.					
12030	Title III Regular Limited English Proficient Students	138,628	72,565	211,193	0.75
Funding supports ESL personnel, their professional development, and for interpretation needs of our LEP families.					
12040	Title IV Regular Limited English Proficient Students	143,191	32,688	175,879	0.60
Provides funding to provide students with a well rounded education, support safe and healthy students and support effective use of technology for personalized learning opportunities.					
12050	Carl Perkins Grant	7,863	89,385	97,248	0.00
Funding pays for professional development and supplies to teachers of Family and Consumer Science, Business, and Technology Education at Burnsville High School.					
13010	QComp/ProPay	2,156,651	3,200	2,159,851	6.00
Provides for expenditures associated with the district's Q-Comp / Pro-Pay programs including salaries and benefits, stipends, performance incentives and other operating expenses.					
13020	Integration and Achievement	1,950,359	76,458	2,026,817	21.52
Provides for expenditures related to the achievement and integration program including salaries and benefits, professional development and other operating expenses.					

2023 Adopted Budget by Budget Unit

(Staffing and budgeted Full-time Equivalent (FTE) as of May 23, 2022)

		Payroll Expenses	Non-Payroll Expenses	Adopted Budget	Adopted FTE's
13030	Compensatory Education	3,862,562	0	3,862,562	11.10
Provides funding for compensatory programs and initiatives to meet the educational needs of students who are under prepared or are not meeting age appropriate performance standards.					
14010	Technology	711,108	928,916	1,640,024	6.25
Provides funding to manage and support the district's technologies including digital learning specialist, instructional, operational resources, equipment and supplies including the District's intranet and telephone systems.					
14020	Technology: Capital Levy	1,482,409	2,137,956	3,620,365	15.00
Provides funding of technical staff, 1:1 initiative, and technical training of instructional staff.					
14030	Technology: ERP and SIS Systems	0	409,564	409,564	0.00
Provides funding to manage the business management software for HR/Business, Finance, Budgeting, Archival (ERP) and Student Information Systems (SIS)					
15010	Instructional Development	74,388	148,950	223,338	0.50
Provides the funding for district professional development (PD) to support the acquisition of district learning goals. Includes operational resources, purchased services, equipment, supplies, and building level PD allocations.					
15020	Curriculum Development	396,640	208,700	605,340	1.75
Provides the funding for the ongoing development of a comprehensive written curriculum. Also includes operational resources, purchased services, equipment and supplies.					

2023 Adopted Budget by Budget Unit

(Staffing and budgeted Full-time Equivalent (FTE) as of May 23, 2022)

		Payroll Expenses	Non-Payroll Expenses	Adopted Budget	Adopted FTE's
15030	Curriculum Adoptions	0	702,000	702,000	0.00
Provides the funding for the purchase of curriculum resources to support delivery of the written curriculum including textbooks, manipulatives, software and software subscriptions.					
15040	Assessment Program	0	156,300	156,300	0.00
Provides the funding necessary to implement required accountability assessments to monitor student progress toward achievement of academic standards through software fees, purchased services, equipment and supplies.					
16010	Board of Education	43,885	89,309	133,194	7.00
Provides the funding for the School Board. Includes School Board stipends, District elections, legal fees and other expenses related to Board initiatives.					
16020	Superintendent	395,793	35,400	431,193	2.00
Provides the funding to operate the office of Superintendent of Schools to support the District's mission, vision, and instructional goals.					
16030	Assistant Superintendent	265,025	41,800	306,825	1.50
Provides the funding to operate the office of the Assistant Superintendent of Schools to support the development, operation and evaluation of the district's elementary and secondary instructional programs.					
16040	Human Resources	615,401	123,090	738,491	5.00
Provides the funding to support operation of the Human Resources office including advertising, recruiting, hiring, staff development, legal fees, software applications, and compliance requirements.					

2023 Adopted Budget by Budget Unit

(Staffing and budgeted Full-time Equivalent (FTE) as of May 23, 2022)

		Payroll Expenses	Non-Payroll Expenses	Adopted Budget	Adopted FTE's
16041	Workers Comp, Unemployment, & Premiums for Property Casualty Liability Insurance	595,000	452,350	1,047,350	0.00
Provides the funding to support the District's workers comp, unemployment, and property, casualty liability insurance and contingencies for deductibles.					
16042	Flexible Savings Accounts/FSA	800,000	0	800,000	0.00
Provides expenditures associated with the District's Flexible Benefit Program. A Health Care FSA is a pre-tax benefit account that's used to pay for eligible medical, dental, and vision care expenses that are not covered by your health care plan or elsewhere.					
16050	Business	270,401	146,388	416,789	1.50
Provides the funding to manage the school district's business services- including operations, finance, and mandatory state and federal reporting.					
16051	Accounting & Finance	737,932	23,000	760,932	7.00
Provides the funding to operate the school district's accounting & finance- including payroll, accounts payable, accounts receivable, and compliance with mandatory state and federal reporting.					
16054	Business OPEB Implicit Chargeback	(529,083)	412,363	(116,720)	0.00
Represents allowable medical, dental, and life insurance costs reimburseable by the district's other postemployment benefits trust (credit to general fund budget) and costs associated with required pension entries for statewide PERA and TRA programs					
16060	Communications and Marketing	357,416	184,000	541,416	3.00
Provides the funding to the District's communications and marketing initiatives, maintenance of District websites, social networks, publications, etc.					

2023 Adopted Budget by Budget Unit

(Staffing and budgeted Full-time Equivalent (FTE) as of May 23, 2022)

		Payroll Expenses	Non-Payroll Expenses	Adopted Budget	Adopted FTE's
16070	Student Registration and Census	349,600	9,786	359,386	4.00
Provides the funding to operate the school district's student registration, enrollment, and reporting services.					
17010	Voluntary PreKindergarten	1,138,234	30,700	1,168,934	23.72
Provides the funding to operate the Voluntary Pre-Kindergarten Program.					
17011	Elementary Administrators	1,601,306	0	1,601,306	8.00
Provides the funding to operate the elementary principals' offices at each school.					
17012	Elementary Building Clerical	663,177	0	663,177	9.00
Provides the funding to operate the elementary principals' offices at each school.					
17013	Elementary EAs	406,196	0	406,196	14.13
Provides the funding various administrative and educational roles at each school.					
17021	Secondary Administrators	1,760,939	0	1,760,939	9.25
Provides the funding to operate the secondary principals' offices at each school.					
17022	Secondary Building Clerical	1,060,947	0	1,060,947	15.00
Provides the funding to operate the secondary principals' offices at each school.					
17025	Miscellaneous Stipends	102,433	0	102,433	0.00
Provides the funding for miscellaneous stipends and extra hours that are currently not attached to another budget unit.					
17027	DEC CLERICAL	70,323	0	70,323	1.00
Provides the funding to operate the Administrative Services at Diamondhead.					

2023 Adopted Budget by Budget Unit

(Staffing and budgeted Full-time Equivalent (FTE) as of May 23, 2022)

		Payroll Expenses	Non-Payroll Expenses	Adopted Budget	Adopted FTE's
18010	Student Transportation	55,000	3,989,996	4,044,996	0.00
Provides the funding to transport eligible students to and from school including during regular and extended year/day terms.					
19010	Custodial	5,134,803	678,536	5,813,339	69.40
Provides the funding to operate the District's custodial services. Includes supplies, equipment and contracted services.					
19020	Building, Grounds and Maintenance	285,981	1,058,560	1,344,541	3.50
Provides the funding to operate the District's building, grounds and maintenance departments. Includes supplies, equipment and contracted services.					
19030	Environmental Health and Safety/ADA Compliance	296,510	2,255,906	2,552,416	2.60
Provides the funding to operate the District's environmental health and safety department as well as Long Term Facilities Maintenance Projects. Includes supplies, equipment and contracted services.					
19040	Facility Leases	0	427,787	427,787	0.00
Provides the funding for the District's facility leases for Pates Stadium, Ice Arena and Diamondhead leasehold improvements.					
19041	Facility Rental	152,000	23,000	175,000	1.00
Provides the funding for the expenditures related to rental of the District's facilities.					
19050	Warehouse and Purchasing	119,649	0	119,649	1.50
Provides the funding to operate the school district's warehouse and purchasing departments.					
19060	Utilities	0	1,961,000	1,961,000	0.00
Provides the funding for the District's utilities.					

2023 Adopted Budget by Budget Unit (Staffing and budgeted Full-time Equivalent (FTE) as of May 23, 2022)					
		Payroll Expenses	Non-Payroll Expenses	Adopted Budget	Adopted FTE's
20010	School Resource Officers	0	111,540	111,540	0.00
	Provides the primary funding for school police resource officers for the district's secondary schools.				
20030	Safe Schools	147,853	138,750	286,603	0.00
	Provides the primary funding for additional Deans at Middle Schools.				
21000	Miscellaneous State and Local Grants	22,766	48,400	71,166	0.00
	Provides the primary funding for various grants received outside of Federal and Special Education funding.				
21100	Emergency Relief Aid	5,730,427	540,072	6,270,499	28.47
	Federal emergency relief funds provided to address the impact that COVID-19 has had, and continues to have, on elementary and secondary schools across the Nation.				
Total General Fund Expenditure Budget		109,335,095	27,804,445	137,139,540	
Total General Fund Period FTEs					1,012.77

	Location Description	Full Name	FTE
01010 - Elem Core Instr Person			
1st Grade Tcr	District-wide	Bueno, Holly A	1.00
		Cantolla, Kaitlin M	1.00
		Davis, Mikayla G	1.00
		Maule, Jessica L	1.00
		OPEN	2.00
	Edward Neill Elementary	Pederson, Rebecca A	1.00
		Olsen, Laura	1.00
		Webster, Susan M	1.00
	Gideon Pond Elementary	Odegard, Elisa	1.00
		Rollie, Alexis K	1.00
		Trekell, Terese	1.00
	Harriet Bishop Elementary	Anderson, Megan	1.00
		Marshall, Debra L	1.00
		Strowbridge, Staci	1.00
	Hidden Valley Elementary	Hiebert, Tracy	1.00
		Ibrahim, Hodan	1.00
		Langreck, Lori	1.00
		Nelson, Kathryn L	1.00
	Rahn Elementary	Gambucci, Ann Marie	1.00
		Peterson, Keri	1.00
	Sky Oaks Elementary	Kachman, Angela	1.00
		Preston, Angela	1.00
		Sands, Anne	1.00
	Virtual Academy - Elementary	Putman, Tanja	0.50
		Wilson, Elizabeth J	0.50
	Vista View Elementary	Gaylord, Samuel M	1.00
		Kohn, Grace	1.00
		Steeg, Kimberly Kaye	1.00
	Wm Byrne Elementary	Risteau, Jill A	1.00
		Simpson, Lisa	1.00
		Smith, Melissa	1.00
2nd Grade Tcr	Edward Neill Elementary	Engdahl, Ann Mary	1.00
		Lenton, Tiffany	1.00
	Gideon Pond Elementary	Ambuehl, Jennifer A	1.00
		Kleven, Mark A	1.00
		Stoneking, Stacy	1.00
	Harriet Bishop Elementary	Jarzyna-ingles, Anne W	1.00
		Meyer, Tanya L	1.00
		Omodt, Jane	1.00
	Hidden Valley Elementary	Andrews, Donna	1.00
		Briggs, Lori A	1.00
		Tollerud, Teresa Jo	1.00
	Rahn Elementary	Mathys, Sandra	1.00
		Plucinak, Jody L	1.00
	Sky Oaks Elementary	OPEN	1.00
		Plaschko, Mary Beth	1.00
		Prugh Ploehn, Kathryn A	1.00
	Virtual Academy - Elementary	Cooper, Kirenza I	0.50
		Gravink, Ashley	0.50

	Location Description	Full Name	FTE
2nd Grade Tcr	Vista View Elementary	Buddington, Alex B	1.00
		Gandrud, Jennifer L	1.00
	Wm Byrne Elementary	Hansmann, Patricia I	1.00
		Krzewki, Catherine D	1.00
		Mulder, Lindsey	1.00
		Tompach, Tracy J	1.00
3rd GradeTcr	District-wide	Schwingle, Cassie L	1.00
	Edward Neill Elementary	Wagner-smith, Sherry	1.00
		Zak, Gloria	1.00
	Gideon Pond Elementary	Bartling, Meghan	1.00
		Traetow, Andrea	1.00
		Zucollo, Susan R	1.00
	Harriet Bishop Elementary	Anderson, Melissa	1.00
		Engen, Amy	1.00
		Holden, Nichole L	1.00
		Jensen, Leta	1.00
	Hidden Valley Elementary	Dwire, Melinda	1.00
		Ertl, Abby	1.00
	Rahn Elementary	Hill, Gary S	1.00
		Naef, Nathan A	1.00
	Sky Oaks Elementary	Jermeland, Meghan M	1.00
		Schneider, Marisa Lynn	1.00
		Stoltz, Lisa A	1.00
	Virtual Academy - Elementary	Cooper, Kirenza I	0.50
		Gravink, Ashley	0.50
	Vista View Elementary	Houtman, Jennifer L	1.00
		Ivory, Courteney	1.00
	Wm Byrne Elementary	Boche, Sonia R	1.00
		Hanson, Debra A	1.00
		Wurdeman, Deb Sue	1.00
4th Grade Tcr	Edward Neill Elementary	Condon, James F	1.00
		Gilray, Rebecca J	1.00
	Gideon Pond Elementary	Gallus, Jeffrey	1.00
		King, Dan Austin	1.00
	Harriet Bishop Elementary	Coronis, Stacy S	1.00
		Soruco, Maria R	1.00
		Warmka, Cheri R	1.00
	Hidden Valley Elementary	Batterman, Jessica M	1.00
		Lecompte, Emilie	1.00
	Rahn Elementary	Hill, Kari L	1.00
		Tofte, Alissa G	1.00
	Sky Oaks Elementary	Bryant, Melanie A	1.00
		Cunnien, Laurie A	1.00
		Teien, Joan K	1.00
	Virtual Academy - Elementary	Davidson, Jessica J	0.50
	Vista View Elementary	Dempsey, Jodi Jean	1.00
		Kramer, Krista	1.00
	Wm Byrne Elementary	Bragg, Kaitlin J	1.00
		Happe, Nicole	1.00
		Walgenbach, Rachel C	1.00

	Location Description	Full Name	FTE
5th Grade Tcr	Edward Neill Elementary	Perez, Teresa G	1.00
	Gideon Pond Elementary	Rau, Jessica	1.00
		Selby, Hannah	1.00
		Voris, Quincy B	1.00
	Harriet Bishop Elementary	Dahl, Sabrina Lynn	1.00
		Morlock, Katie R	1.00
		Wallenta, Paul S	1.00
	Hidden Valley Elementary	Peltier, Brad W	1.00
		Schwenn, Jeffrey A	1.00
	Rahn Elementary	Hartl, Aran J	1.00
		Slattery, Cara	1.00
	Sky Oaks Elementary	Berg, Matthew T	1.00
	Virtual Academy - Elementary	Davidson, Jessica J	0.50
	Vista View Elementary	Orlenko, Corbin D	1.00
		West, Julie	1.00
	Wm Byrne Elementary	Gierada, Barbara L	1.00
		Kersten, Sarah M	1.00
		Zupke, Samuel	1.00
Kindergarten Tcr	District-wide	Lamont, Heidi O	1.00
		OPEN	1.00
	Edward Neill Elementary	Allman, Kellie R	1.00
		Lippka, Jonalyn	1.00
	Gideon Pond Elementary	Anderson, Brittney	1.00
	Harriet Bishop Elementary	Berryman, Ashley A	1.00
		Harrold, Stacey L	1.00
		Pavek, Brooke C	1.00
	Hidden Valley Elementary	Finch, Christine M	1.00
		McCroskey, Shari	1.00
		Walby, Molly E	1.00
	Rahn Elementary	Elliott, Rachel R	1.00
		McCarthy, Jennifer	1.00
		Richardson, Sarah	1.00
	Sky Oaks Elementary	Nicholson, Marcia L	1.00
		Ritchie, Jacki Rae	1.00
		Strahota, Sara J	1.00
	Virtual Academy - Elementary	Putman, Tanja	0.50
		Wilson, Elizabeth J	0.50
	Vista View Elementary	Downey, Samantha R	1.00
		Tucci, Amy J	1.00
	Wm Byrne Elementary	Calnon, Jennifer	1.00
		Meisner, Brionna	1.00
Learning Specialist	Edward Neill Elementary	Herkenhoff, Patty Ann	0.75
		Kugler, Julie	0.25
	Gideon Pond Elementary	Macnaughton, Laura	0.50
		Mirs, Laurel	0.50
	Hidden Valley Elementary	Nurmela, Crystal	0.50
	Sky Oaks Elementary	Harves, Nicole R	0.30
		Lindell, Michelle M	1.00
		Ruhland, Maria	0.20
	Virtual Academy - Elementary	Wening, Alesha	1.00

	Location Description	Full Name	FTE		
Psychologist	Hidden Valley Elementary	Komar, Karen K	0.50		
02010 - MS Core Instr Personnel					
6th Grade Tcr	Eagle Ridge MS	Barton, Duane	1.00		
		Flynn, Catherine T	1.00		
		Kraft, Stephen	1.00		
		Lewandowski, Megan J	0.33		
		Lundahl, Timothy	0.32		
		Mikelson, Teresa	0.67		
		Mosey, Pat	0.66		
	Nicollet MS	Cin, Stephanie P	0.67		
		Coronis, Anthony L	0.56		
		Glas, John M	0.50		
		Kelly, Katie J	0.33		
		Khamratthanome, Bounthavy	0.83		
		Kohner, Joseph E	0.50		
		Nemetz, Scott	1.00		
		Peterson, Christine K	0.17		
		Ring, Katlin	0.67		
		Smalley, Amy C	0.34		
		Virtual Academy Secondary	Coronis, Anthony L	0.33	
			Mosey, Pat	0.34	
			Smalley, Amy C	0.33	
	Lang Arts Tcr	Eagle Ridge MS	Anderson, Kristen L	0.50	
			Blair, Michael E.	0.50	
			Elward, Lucius P	0.50	
			Moran, Molly K	1.00	
			Parkinson, Jacquelyn R	0.50	
			Thomas, Jessica	0.34	
			Nicollet MS	Armajani, Jonathan C	0.67
Hansen, William C		0.67			
Islam, Tasia		0.34			
Mohr, Sydney M		0.33			
Orth, Steven D.		0.33			
Salad, Hawa D		0.50			
Schmidt, Jennifer R		1.00			
Smolke, Angela S		0.33			
Sorensen, Brad		0.50			
Math Tcr		Eagle Ridge MS		Czapar, Ryan J	0.50
				Drutowski, Alison	0.50
				Grueneich, Janelle	0.50
				Isaacson, Melissa J	0.50
			Nelson, Michelle L	0.50	
	Nicollet MS		Benson, Ross S	0.50	
			Funches, Monique Roy	0.34	
		Geddes, Richard W	0.67		
		Goff, Tara P	0.33		
		McNeil, Madeline P	0.50		
		Philipsek, Megan K	0.50		
	Van Hoorn, Kirsten	0.50			

Staffing Detail by Budget Unit as of May 23, 2022

	Location Description	Full Name	FTE
PLTW	Eagle Ridge MS	Beckmann, Emily C	1.00
Science Tcr	Eagle Ridge MS	Hammer, Jeffrey	1.00
		Lundahl, Timothy	0.17
		Meyer, Chad	1.00
		Pieper, Jill	0.17
	Nicollet MS	Challgren, Peg Ten	1.00
		Pettinelli, Stephen M	1.00
		Pieper, Jill	0.66
		Wynia, Giselle	0.50
Soc Stu Tcr	Eagle Ridge MS	Klubberud, Michael	1.00
		Lundahl, Timothy	0.17
		Simmons, Sean D	0.17
		Yager, Amy	1.00
	Nicollet MS	Elfering, Jean	0.83
		Iverson, Adam	1.00
		Khamratthanome, Bounthavy	0.17
		Schweim, Robert W	1.00
World Lang Tcr	Eagle Ridge MS	Barry, Amber Leigh	0.33
	Nicollet MS	Blazquez, Javier	0.33
03010 - HS Core Instr Personnel			
Avid Tcr	Burnsville HS	Harrod, Kim	0.20
BEA President	District-wide	Wuensch, Wendy Drugge	1.00
Dance Tcr	Burnsville HS	Waller, Jennifer	0.20
Lang Arts Tcr	Burnsville HS	Bell, Layne E	0.80
		Burke, Katie J	1.00
		Burnham, Charles F	0.80
		Christy, Danielle H	0.20
		Connell, Paul J	0.60
		Dyrhaug, Michelle	1.00
		Eggers, Sheana	0.80
		Hansen, Marie C	0.80
		Millea, Allison B	0.80
		Parkin, Landen A	1.00
		Rudolph, Roxanne J	1.00
		Staum, Anne C	1.00
		Waller, Jennifer	0.60
		Webber, Gloria M	1.00
	Virtual Academy Secondary	Bell, Layne E	0.20
		Burnham, Charles F	0.20
		Eggers, Sheana	0.20
		Millea, Allison B	0.20
		Mohr, Sydney M	0.20
		Orth, Steven D.	0.17
		Thomas, Jessica	0.33
Math Tcr	Burnsville HS	Banitt, Justin	0.70
		Christian, David	0.80
		Croatt, Charles C	1.00
		Delmont, Brooke	1.00
		Harrod, Kim	0.40

Staffing Detail by Budget Unit as of May 23, 2022

	Location Description	Full Name	FTE
Math Tcr	Burnsville HS	Kuziej, Janet L	0.80
		Meuser, Teresa	1.00
		Nelson, Amy	1.00
		Noss, Jean	1.00
		Quamme, David R	1.00
		Vogt, Kendra M	0.80
	Virtual Academy Secondary	Banitt, Justin	0.20
		Christian, David	0.20
		Goff, Tara P	0.67
		Harrod, Kim	0.20
PLTW	Virtual Academy Secondary	Kuziej, Janet L	0.20
		Haupt, Jonathan R	0.18
Science Tcr	Burnsville HS	Blandin, Melissa	1.00
		Davidson, Elizabeth A	0.80
		Douglas, Lori	1.00
		Hoeschen, Kerry	1.00
		Holt, Clayton B	0.67
		Huber, Jon Alan	1.00
		Huemoeller, Michael T	0.60
		Johnson, Cory Charles	0.60
		Morgan, William E	1.00
		OPEN	1.00
	Virtual Academy Secondary	Pranschke, Stephanie T	0.80
		Weightman, Elizabeth C	1.00
		Holt, Clayton B	0.20
		Huemoeller, Michael T	0.20
		Johnson, Cory Charles	0.20
		Lundahl, Timothy	0.17
		Pieper, Jill	0.17
Soc Stu Tcr	Burnsville HS	Aars, Kristina	1.00
		Bousu, Mollie J	0.80
		Engelhardt, William T	1.00
		Eppen, Matthew W	0.90
		Graff, Jenn	1.00
		Jensen, Jennifer	1.00
		McDevitt, Paul David	0.80
		Milnovich, Chris M	1.00
		Moffitt, Leslie Allan	0.80
		Silberman, Kevin	1.00
	Virtual Academy Secondary	Simmons, Sean D	0.30
		Strand, Nate R	1.00
		VanSchoonhoven, Katherine	0.80
		Wendling, Kathryn	0.90
		Bousu, Mollie J	0.20
		Elfering, Jean	0.17
		Eppen, Matthew W	0.10
		Lundahl, Timothy	0.17
		Moffitt, Leslie Allan	0.20
		VanSchoonhoven, Katherine	0.20
		Wendling, Kathryn	0.10

	Location Description	Full Name	FTE
World Lang Tcr	Burnsville HS	Barry, Amber Leigh	0.50
		Blazquez, Javier	0.47
		Dundon, Mary Lou	1.00
		Holcombe, Sara J	0.80
		Lehner, Timothy	1.00
	Virtual Academy Secondary	Blazquez, Javier	0.20
<hr/>			
04010 - K12 PhyEd/Art/Math/Music			
Art Tcr	Burnsville HS	Buckrey, Susan E	1.00
		Kegley, Robyn E	1.00
		OPEN	0.70
		Soley, Nicole D	1.00
	Eagle Ridge MS	Weilandgruber, Elizabeth	0.83
	Edward Neill Elementary	Heckmann, Danae J	0.50
	Gideon Pond Elementary	Schriver, Mara C	0.75
	Harriet Bishop Elementary	Nazarenus, Taylor R	1.00
	Hidden Valley Elementary	Merkel, Sara A	0.75
	Nicollet MS	Wilson, Kacie L	0.83
	Rahn Elementary	Irmiter, Micayla M	0.25
		Schriver, Mara C	0.25
	Sky Oaks Elementary	Irmiter, Micayla M	0.75
	Virtual Academy - Elementary	OPEN	0.25
	Virtual Academy Secondary	Weilandgruber, Elizabeth	0.17
		Wilson, Kacie L	0.17
	Vista View Elementary	Heckmann, Danae J	0.50
		Merkel, Sara A	0.25
	Wm Byrne Elementary	Vo, Kelly Rae	1.00
Band Tcr	Burnsville HS	French, Keith J	1.00
		Holmes, Molly	1.00
		Kosloski, Scott	0.20
	Eagle Ridge MS	Armstrong, Nicholas G	0.75
	Nicollet MS	Bakken, Ann	0.67
		Armstrong, Nicholas G	0.08
Music Tcr	Eagle Ridge MS	OPEN	0.50
		Tranby, Bonnie K.	0.50
	Edward Neill Elementary	Buck, Rebecca L	0.75
	Gideon Pond Elementary	Geesman, Garrett D	1.00
	Hidden Valley Elementary	Wood, Kimberly R	0.75
	Rahn Elementary	Buck, Rebecca L	0.25
		Wagner, Kristen A	0.25
	Sky Oaks Elementary	Wagner, Kristen A	0.75
	Virtual Academy - Elementary	OPEN	0.25
	Virtual Academy Secondary	Leyva, Ana M	0.10
		OPEN	0.08
	Vista View Elementary	Tranby, Bonnie K.	0.50
		Wood, Kimberly R	0.25
	Wm Byrne Elementary	Langsjoen, Sonja	1.00
Phy Ed Tcr	Burnsville HS	Fritz, Kimberly A	0.50
		Johnson, Ronna E	1.00
		Reuss, Eric	1.00

	Location Description	Full Name	FTE
Phy Ed Tcr	Burnsville HS	Riggs, Mark D	1.00
		Stachowski, Susan C	0.80
		Varpness, Vincent C	1.00
	Eagle Ridge MS	Hermes, Shelley	1.00
		Holden, Matt J	0.34
		Pearson, Chad W	1.00
	Edward Neill Elementary	Moorlach, Brian	0.50
	Gideon Pond Elementary	Dungey, Nate	0.75
	Harriet Bishop Elementary	Loesch, Jake	1.00
	Hidden Valley Elementary	Shelden, Jon	0.75
	Nicollet MS	Brown, Christopher M	0.66
		Fritz, Kimberly A	0.17
		OPEN	1.50
	Rahn Elementary	Moorlach, Brian	0.50
	Sky Oaks Elementary	Ceola, Mike	0.75
	Virtual Academy - Elementary	OPEN	0.25
	Virtual Academy Secondary	Fritz, Kimberly A	0.33
		Stachowski, Susan C	0.20
		Vista View Elementary	Ceola, Mike
	Strings Tcr	Wm Byrne Elementary	Dungey, Nate
Shelden, Jon			0.25
Mckane, Michelle M			1.00
Burnsville HS		Kosloski, Scott	0.40
		Eagle Ridge MS	Armstrong, Nicholas G
	Nimchuk, Sarah T	0.25	
Vocal Tcr	Nicollet MS	Kosloski, Scott	0.40
	Burnsville HS	Leyva, Ana M	0.90
	Nicollet MS	Bakken, Ann	0.33
06000 - Medical Careers Personnel			
Health Care Tcr	Burnsville HS	Werner-Dempsey, Anne	1.00
06010 - FACS Instr Personnel			
Facs Tcr	Burnsville HS	Deutsch, Matt R	0.80
		Eichten, Heidi J	1.00
		Holman, Sandra L	1.00
		OPEN	0.20
		Spies, Gabrielle	1.00
	Eagle Ridge MS	Borden, Paige M	1.00
	Nicollet MS	OPEN	0.33
		Ruzichka, Laurie	1.00
	Virtual Academy Secondary	OPEN	0.83
	06020 - Trade Instr Ed Personnel		
Ind Tech Tcr	Burnsville HS	Haupt, Jonathan R	0.82
		Patrie, Orion D	1.00
		Tesmer, Russell	1.00
PLTW	Nicollet MS	Paetzold, Robert James	0.84
	Virtual Academy Secondary	Paetzold, Robert James	0.16

Staffing Detail by Budget Unit as of May 23, 2022

	Location Description	Full Name	FTE
06030 - Career & Technical Personnel			
Work Exp Tcr	Burnsville Alternative HS	Bates, Daniel W	0.90
06040 - Business Ed Personnel			
Business Tcr	Burnsville HS	Carroll, Michele	1.00
		Lunde, Christopher R	1.00
		OPEN	1.00
	Virtual Academy Secondary	OPEN	1.00
06050 - Partnership Burnsville Pro			
Dir Strategic Partnerships	Diamondhead	Funston, Kathy L	1.00
07010 - K12 Media Serv Support			
EA Media Support	Edward Neill Elementary	Scheuneman, Kristen Joy	0.59
	Gideon Pond Elementary	Butorac, Melanie A	0.59
	Harriet Bishop Elementary	Becker, Sarah J	0.59
	Hidden Valley Elementary	Schatzlein, Rachel	0.59
	Rahn Elementary	Christman, Amber S	0.59
	Sky Oaks Elementary	Berge, Kristy K	0.59
	Vista View Elementary	Cermak, Barbara L	0.59
	Wm Byrne Elementary	Engberg, Denise G	0.59
Media Specialist	Burnsville HS	Oie, Roger	1.00
	Eagle Ridge MS	Galland, John	1.00
	Nicollet MS	Meyer, Nancy L	1.00
07020 - K12 Gifted Talented Support			
Advanced Learning	Edward Neill Elementary	Petrella, Sara M	0.50
	Sky Oaks Elementary	Petrella, Sara M	0.50
07030 - K12 Guidance Serv Support			
College & Career Specialist	Burnsville HS	Sexton, Marcia	1.00
Counselor	Burnsville HS	Akerson, Rebecca D	1.00
		Harrison, Phillip Scott	1.00
		Henderson, Michelle A	1.00
		Markham, Angela L	1.00
		Marshall, Veronica Jean	1.00
		Soderholm, John	1.00
		Eagle Ridge MS	Russell, Desha S
		Thornton, Madison M	1.00
	Nicollet MS	Hemmah, Katy M	1.00
		Waterman, Molly K	1.00
07040 - DEANS			
Dean	Burnsville HS	Meyer, Joseph	1.00
		OPEN	1.00
		Shaw, David W	1.00
	Eagle Ridge MS	Bohr, Jennifer L	1.00
		Brown, Sterling D	1.00
		Bang, Rebecca K	1.00
	Nicollet MS	Conwell, Peirre D	1.00

	Location Description	Full Name	FTE
07060 - ESL			
ESL Tcr	Burnsville Alternative HS	Friendt, Andrea Lynn	1.00
	Burnsville HS	Lorincz, Kristen L	1.00
		Moren, Kimberly J	1.00
		Moukrim, Mina	1.00
		OPEN	2.00
		Parent, Andrea J	1.00
		Winterlin, Jeffrey	1.00
	District-wide	Quinonez, Jessica L	1.00
	Eagle Ridge MS	Gregory, Amanda	1.00
		Limberg, Mindi L	1.00
		OPEN	1.00
	Edward Neill Elementary	Moran, Ryan W	1.00
		Musa-agboneni, Kari	1.00
		Rhinevault, Lynn	1.00
	Gideon Pond Elementary	Beeninga, Jane	1.00
		King, Kristen	1.00
	Harriet Bishop Elementary	Blom, Anne E	1.00
		Christenson, Rachel A	1.00
		Kessler, Cecilia	1.00
		McKinney, Margo	1.00
		Mikunda, RYANNE R	1.00
	Hidden Valley Elementary	Cadwell, Ann M	1.00
		Cullison, Caroline E	1.00
		Michels, Christine	1.00
		O'brien, Brianna	1.00
	Nicollet MS	Kermes, Katherine M	1.00
		Olson, Amy	1.00
		Proctor, Beth	1.00
	Rahn Elementary	Arias, Angela Joy	1.00
		Olson, Kimberly Lenora	1.00
	Sky Oaks Elementary	Jones, Noelle	1.00
		King, Hannah	1.00
		Rippenburg, Wendy A	1.00
	Virtual Academy - Elementary	Thompson, Saloua	1.00
	Virtual Academy Secondary	Blair, Frances M.	1.00
	Vista View Elementary	Carlson, Lisa M	1.00
		Zimmerman, Kara J	1.00
	Wm Byrne Elementary	Benson, Briana M	1.00
		Johnson, Ashley	1.00
		OPEN	1.00
ESL Tcr, ESL Tcr	Sky Oaks Elementary	OPEN	1.00
09010 - Spec Ed Salaries/Bene			
Ace L3 Secretary	BES Transition Services	Tanberg, Teri L	1.00
Ace L4 Admin Asst/Specialist	Diamondhead	Gries, Brenda J	1.00
		OPEN	1.00
	ECSE	Mcbride, Kristen	1.00
Assistive Tech Tcr	District-wide	Nelson, Katie L	1.00

Staffing Detail by Budget Unit as of May 23, 2022

	Location Description	Full Name	FTE
Behavior Analyst	District-wide	Czapar, Kelly N	0.90
		Ewert, Casey B	0.90
Cultural Liaison	ECSE	Hassan, Rahma	1.00
		Riveros, Anna-maria	1.00
Dape	District-wide	Holden, Matt J	0.66
		Opatz, Larry	1.00
	Eagle Ridge MS	Brown, Christopher M	0.34
	ECSE	Sweeney, Michael J	1.00
Dir Special Ed	Diamondhead	Piotrowski, Amy	1.00
ECSE Coordinator	ECSE	Wakal, Kimberly B	1.00
ECSE Tcr	ECSE	Albersheim-Carter, Marcina	1.00
		Barcus, Christine J	1.00
		Blomquist, Stephanie	1.00
		Blood, Kelsey Jo	1.00
		Bresina, Autumn R	1.00
		Clancy, Carissa	1.00
		Ebenhoh, Teegan M	1.00
		Erbes, Sarah L	1.00
		Mauroy, Renee D	1.00
		Misfeldt, Eiley K	1.00
		Nelson, Katherine	1.00
		Ness, Karen M	1.00
		Niemiec, Alicia	1.00
		Nolte, Nicole L	1.00
		OPEN	0.60
		Spaulding, Sheila J	1.00
		Yost, Molly M	1.00
Learning Specialist	Edward Neill Elementary	Herkenhoff, Patty Ann	0.25
		Kugler, Julie	0.75
	Gideon Pond Elementary	Macnaughton, Laura	0.50
		Mirs, Laurel	0.50
	Harriet Bishop Elementary	Campen, Kim A.	1.00
		Schafer, Kristy J	0.50
	Hidden Valley Elementary	Collins, Leanne	1.00
		Nurmela, Crystal	0.50
	Rahn Elementary	Keuler, Lori J	0.25
	Sky Oaks Elementary	Harves, Nicole R	0.70
		Ruhland, Maria	0.80
	Vista View Elementary	Crawford, Cynthia Y	1.00
	Wm Byrne Elementary	Hanson, Lisa	1.00
Nurse - LPN	ECSE	Wolke, Sara C	0.60
	Edward Neill Elementary	Wittenkeller, Jane E	0.07
Nurse - LSN	Burnsville HS	Beaulieu, Kourtney A	0.36
	District-wide	Bien, Bernadette L	0.40
	Eagle Ridge MS	Eilertson, Jane Ann	0.21
	Gideon Pond Elementary	Cozad, Patricia M	0.19
	Nicollet MS	Mjelleli, Emily L	0.21
	Rahn Elementary	Stinson, Katrina L	0.04
	Sky Oaks Elementary	Cozad, Patricia M	0.27
	Wm Byrne Elementary	Stinson, Katrina L	0.72

	Location Description	Full Name	FTE
Nurse - LSN, Nurse - LSN	Edward Neill Elementary	OPEN	1.00
Nurse - RN	Burnsville HS	Robison, Kim A	0.16
	Hidden Valley Elementary	Exley, Amanda	0.18
Occ Therapist	District-wide	Cesaro-Moxley, Rachel L	0.50
		Kolstad, Michele M	1.00
		Navarro, Rachel	1.00
		Roeske, Melissa L	1.00
	ECSE	Erickson, Kayla M	1.00
		Robole, Vicki M	1.00
Physical Therapist	District-wide	Lian, Jocelyn M	1.00
Psychologist	BES Transition Services	Nierengarten, Brianna L	0.10
	Burnsville Alternative HS	Gunderson, Mary Jane N	0.10
	Burnsville HS	Gunderson, Mary Jane N	0.90
		Nierengarten, Brianna L	0.90
	Eagle Ridge MS	Kral, Melissa M	1.00
	ECSE	Kennedy, Jennifer K	0.60
		Petersen, Holly M	0.80
	Edward Neill Elementary	Otto, Caron	0.50
	Gideon Pond Elementary	Otto, Caron	0.50
	Harriet Bishop Elementary	Lautigar-beutz, Julie	0.50
	Hidden Valley Elementary	Komar, Karen K	0.50
	Nicollet MS	Krylova, Anna V	1.00
	Rahn Elementary	Lautigar-beutz, Julie	0.50
	Sky Oaks Elementary	Arthur, Paula J	0.50
	Vista View Elementary	Roehl, Peter A	0.50
	Wm Byrne Elementary	Roehl, Peter A	0.50
Social Worker	Burnsville HS	Hewett, Thomas	0.35
		Morrissey, Michelle M	0.35
	Eagle Ridge MS	Poliquin, Anne E	0.35
	ECSE	Reichert, Kristen K	1.00
	Edward Neill Elementary	OPEN	1.00
	Gideon Pond Elementary	Khalif, Abdullahi M	0.35
	Harriet Bishop Elementary	Koch, Rebecca M	0.35
	Hidden Valley Elementary	Gauer-Kloos, Megan	0.35
	Nicollet MS	Fahey, Kara J	0.35
		Mains, Kristin E	0.35
	Rahn Elementary	Keller, Katie	0.35
	Sky Oaks Elementary	Bruns, Brittany G	0.35
	Vista View Elementary	Lemke, Emily A	0.35
	Wm Byrne Elementary	McDowell, Morgan	0.28
Sped Ea	BES Transition Services	Anderson, Cheryl L	0.88
		Engstrom, Heather L	0.88
		Finch, Jeanne	0.88
		Frank, Sharon M	0.88
		Goodling, Beverly	0.88
		OPEN	0.88
		Tousignant, Kare-kathleen K	0.88
	Burnsville HS	Ahmed, Amina	0.88
		Andreasen, Arnold	0.88
		Bocklund, Timothy	0.88

	Location Description	Full Name	FTE
Sped Ea	Burnsville HS	Chroust, Vicki	0.88
		Dixon, Dave T	0.88
		Garvis, Angela N	0.88
		Gibbs Holtan, Helen	0.88
		Grahn, Anders AD	0.88
		Kaytor, Linda K	0.88
		Kinsella, Joe	0.88
		Kolumbus, Ryan C	0.88
		Larson, Janet Anne	0.88
		Lorig, Diane	0.88
		Martinson, Joni	0.88
		Meyman, Whitney	0.88
		Nelson, Mark W	0.88
		Nowlan, Travis M	0.88
		OPEN	1.88
		Ray, Stephen	0.88
		Robles, Michelle R	0.88
		Smidt, Holly B	0.88
		Wolff, Denise	0.88
	Eagle Ridge MS	Ashley, James M	0.91
		Bringgold, Debbie	0.91
		Gillis, Cindy M	0.91
		Mccray, Sharon	0.91
		Murray, Cathleen H	0.91
		Nassar, Thanaa R	0.91
		Ruiz, Winston V	0.91
		Schwarz, Darcie N	0.91
		Thomason, Michal R	0.91
	ECSE	Artiga-rosa, Patricia	0.81
		Bachmeier, Michelle M	0.81
		Behme, Beth K	1.00
		Johnson, Karen A	0.81
		Kantor, Nancy M	0.81
		Kimball, Marcy L	0.81
		OPEN	0.81
		Painter, Terri Lynn	0.81
		Rupp, Kalene J	0.81
		Schroeder, Gina M	0.81
	Edward Neill Elementary	Smith, Brittney	0.81
		Walterson, Kristen A	0.81
		Abdallah, Hibo Saad	0.91
		Gronseth, Allyssa M	0.91
		Hammoud, Hanaa	0.91
		Heger, Elizabeth A	0.91
		Herman, Linda R	0.91
		Kuhlman, Susan M	0.91
		Pofahl, Janell C	0.91
		Rockett, Joan	0.91
	Gideon Pond Elementary	Dahir, Hamdi A	0.91
		Hendrickson, Lisa	0.91

	Location Description	Full Name	FTE
Sped Ea	Gideon Pond Elementary	Moalim, Shamso A	0.91
		Theis, Rachael L	0.91
		Weatherford, Andrea M	0.91
		Wilson, Danelle P	0.91
	Harriet Bishop Elementary	Adamson, Kimberly S	0.91
		Albrecht, Lauren E	0.91
		Carney, Catherine	0.91
		Chhen, Kuoy L	0.91
		Hickerson, Karen A	0.91
		Keirstead, Amy	0.91
		Mathews, Heather L	0.91
		Mcguire, Rebecca L	0.91
		Mohamed Ahmed, Malaz K	1.00
		Spott, Anne B	0.91
		Weber, Robert D	0.91
	Hidden Valley Elementary	Daoud, Ayan M	0.91
		Datres, Susan	0.91
		Davila, Ruth E	0.91
		Jones, Jean	0.91
		Kienitz, Darlys	0.91
		Leake, Roxanne	0.91
		Ochoa Herrera, Lisbet	0.91
		Peterson, Kim L	0.91
		Sanz, Margaret M	0.91
		Twardoski, Ruthann	0.91
	Nicollet MS	Bourdon, Carl R	0.91
		Brown, Patricia L	0.91
		Daniels, Floyd L	1.00
		Graves, Diana L	0.91
		Miskiewicz, Kelly A	0.91
		Needham, Diane M	0.91
		Neptuno-temozan, Julio	0.91
		Olson, Pamela S	0.91
		OPEN	0.91
		Payne, Debra Kay	0.91
		Queen, LeVar A	0.91
		Reeves, Jonathan K	0.91
		Soucek, Mary L	0.91
		Thompson, Robert L	0.91
	Rahn Elementary	Brown, Wilhelmina G	0.81
		Buising, Marlene L	0.91
		Droege, Sheryl L	0.91
		Nordeen, Denise M	0.91
		Raichert, Sarah	0.91
		Reuter, Lisa L	0.91
		Sarhan, Sabah	0.91
		Torres-Busch, Michaeline E	0.91
		Wegner, Lisa L	0.91
	Sky Oaks Elementary	Boldt, Julie A	0.91
		Dent, Jonathan M	0.91

	Location Description	Full Name	FTE
Sped Ea	Sky Oaks Elementary	Jungers, Gail	0.91
		Kegley, Renee C	0.91
		King, Samantha F	0.91
		Mohamed, Yurub M	0.91
		Mohamud, Fauzia T	0.91
		OPEN	0.91
		Ruiz, Jessica	0.91
		Santos, Laura	0.91
		Schiller, Lori L	0.91
		Spaulding, Kristie	0.91
	Virtual Academy - Elementary	Ulrich, Kimberly A	0.94
	Vista View Elementary	Auge, Elizabeth	0.91
		Boekhoff, Melissa M.	0.91
		Brown, Ruth	0.91
		Hall, Jennifer J	0.91
		Kuskayeva, Irina V	0.91
		Latourelle, Sandra E	0.91
		Meitrodt, Kathleen M	0.91
		Ringger, Tracy A	0.91
		Roark, Kari L	0.91
		Scott, Angela J	0.91
	Wm Byrne Elementary	Adam, Sile Y	0.91
		Ahmed, Faiza A	0.91
		Freeman, Tammy S	0.91
		Godfrey, Cintra L	0.91
		Ho, Linda S	0.91
		Koechlein, Laurie Leeanne	0.91
		Kowalski, Shelly	0.91
		O'donnell, Joseph J	0.91
		Stubbs, Victoria E	1.00
		Theyson, Brenda	0.91
Sped Supervisor	Diamondhead	Cherry, Carolyn J	0.50
		Middendorf, Jennifer L	1.00
		Thompson, Dana K	1.00
Sped Tcr	District-wide	Oscarson Wanzek, Kristi R	1.00
	BES Transition Services	Anderson, Kasey D	1.00
		Chrissis, Erik R	1.00
		Schmidtke, Angila R	1.00
	Burnsville Alternative HS	Morris, Angela J	1.00
	Burnsville HS	Bortel, Shawn D	1.00
		Brammer, Olivia A	1.00
		Bunkers, Kathleen K	1.00
		Cox, Kelly J	1.00
		Eiler, Elizabeth P	1.00
		Ganion, Emma C	1.00
		Grant, Cara	1.00
		Hood, Julia S	1.00
		Jenquin, Marielle R	1.00
		Kappel, Genevieve N	1.00
		Kibler, Christian D	1.00

Staffing Detail by Budget Unit as of May 23, 2022

	Location Description	Full Name	FTE
Sped Tcr	Burnsville HS	Knox, Jacob M	1.00
		McCool, Molly	1.00
		Nelson, Emily A	1.00
		Neuer, Michelle E	1.00
		OPEN	2.00
		Pawley, Meg A	1.00
		Roark, Kim J	1.00
		Seamen, Michelle A	1.00
		Smith, Ashley	1.00
		Walker, Ryan M	1.00
		Webber, Jeffrey	1.00
	Eagle Ridge MS	Baxa, Emily E	1.00
		Byrne, Edward	1.00
		Chouanard, Mary E	1.00
		Fairchild, Lindsey	1.00
		Fredricks, Joel J	1.00
		Hermansen, Laura J	1.00
		Nash, Derek B	1.00
		Williams, Elizabeth	1.00
	ECSE	Zondag-Hamer, Kimberly	0.50
	Edward Neill Elementary	Bing, Dena M	1.00
		Discher, Tracy L	1.00
		Okerstrom, Michelle K	1.00
		Sullivan, Jodi L	0.50
	Gideon Pond Elementary	Lynch, Molly	1.00
		Tucker, Emily A	1.00
		Tushie, Patricia	1.00
	Harriet Bishop Elementary	Classen, Jodie L	1.00
		Hassler, Hannah E	1.00
		Logan, Kari M	0.50
		Mickelson, Ashly D	1.00
	Hidden Valley Elementary	Pred, Renee R	1.00
		Biagi, Louis	1.00
		OPEN	3.00
		Pettes, Julie A	1.00
		Sullivan, Jodi L	0.50
	Nicollet MS	Bell, Angela	1.00
		Blons, Liane M	1.00
		Geditz, Randall J	1.00
		McCue, Michelle	1.00
		Rappe, Brian	1.00
		Scheit, Andrea	1.00
		Schroeder, Jean M	1.00
		Tetzloff, Mitzi R	1.00
		Tillman, Megan	1.00
	Rahn Elementary	Branch, Nancy C	1.00
		Fechner, Susan	0.50
		Hoffman, Jada L	1.00
		Lauer, Lisa N	1.00
		Zwicke, Kayla M	1.00

	Location Description	Full Name	FTE	
Sped Tcr	Sky Oaks Elementary	Crespin, Jason C	1.00	
		Hansen, Amy	1.00	
		Hanson, Amy E	1.00	
		Logan, Kari M	0.50	
		Sowieja, Olivia	1.00	
		Tangney, Amy K	1.00	
	St. John's	OPEN	0.40	
	Virtual Academy - Elementary	Hill, Madeline E	1.00	
	Virtual Academy Secondary	Ferguson, Antanaya S	1.00	
		Miller, Jill Elizabeth	0.75	
	Vista View Elementary	Fechner, Susan	0.50	
		Peterson, Julie A	1.00	
		Santele, Layne A	1.00	
		Trisko, Mary	1.00	
		Woods, Megan M	1.00	
	Wm Byrne Elementary	Bugenhagen, Erica A	1.00	
		Heller, Mary R	1.00	
		Henrich, Sarah L	1.00	
		Smith, Jennifer S	1.00	
		Stegbauer, Amethyst R	1.00	
		Zondag-Hamer, Kimberly	0.50	
Speech Tcr	Burnsville HS	Barnes, Cherise C	1.00	
	Eagle Ridge MS	Oscarson Wanzek, Kristi R	1.00	
	ECSE	Jordan, Joanna	1.00	
		Melquist, Michelle	1.00	
		Niesen, Elizabeth A	1.00	
		Vodnick, Sarah A	1.00	
		Woodcock, Sue M	0.80	
	Edward Neill Elementary	Jamison, Darcie L	1.00	
	Gideon Pond Elementary	Hjermstad, Heather	1.00	
	Harriet Bishop Elementary	Neal, Bryeny B	1.00	
	Hidden Valley Elementary	Spoden, Annemarie	1.00	
	Nicollet MS	Brinkman, Carole I	0.50	
		Schlichting, Catherine	0.50	
	Rahn Elementary	Klinnert, Elizabeth	1.00	
	Sky Oaks Elementary	Faust, Danielle M	1.00	
	Virtual Academy - Elementary	Meulebroeck, Susanne	1.00	
	Vista View Elementary	Goldsmith, Emily R	1.00	
	Wm Byrne Elementary	Kibler, Jeanne	1.00	
	Work Exp Tcr	BES Transition Services	Erickson, Shelly L	1.00
		Burnsville HS	OPEN	1.00
			Pope, Kristina	1.00
10010 - ALC/At Risk Programming				
6th Grade Tcr	Eagle Ridge MS	Lewandowski, Megan J	0.17	
		Mikelson, Teresa	0.33	
	Nicollet MS	Cin, Stephanie P	0.33	
		Coronis, Anthony L	0.11	
		Glas, John M	0.50	
		Kohner, Joseph E	0.50	

Staffing Detail by Budget Unit as of May 23, 2022

	Location Description	Full Name	FTE
6th Grade Tcr	Nicollet MS	Ring, Katlin	0.33
Abe Tcr	Community Ed	Jordan, Allison A	1.00
Ace L3 Secretary	Burnsville Alternative HS	Ho-Buttleman, Staci	1.00
Ace L4 Admin Asst/Specialist	Diamondhead	Odowa, Huda Y	1.00
Art Tcr	Burnsville Alternative HS	Braun, Catherine A	1.00
CE Coordinator 3	Hidden Valley Elementary	Dudley, Martha Viczian	0.20
	Sky Oaks Elementary	Konopa, Stacey	0.20
	Wm Byrne Elementary	Kristjanson, Jeanine	0.20
CE Coordinator I	Rahn Elementary	Berge, Sara K	0.18
Community Connections Coord	Community Ed	Daoud, Hamde	0.33
		Ontiveros, Eddieca	0.33
Counselor	Burnsville Alternative HS	Romano, Molly E	0.50
EA Level 3	Burnsville Alternative HS	White, Ruthann	0.88
Lang Arts Tcr	Burnsville Alternative HS	Bergman, Anna T	0.50
		Meilleur, Stephanie J	1.00
		OPEN	0.75
		Sloneker, Angela	1.00
	Eagle Ridge MS	Anderson, Kristen L	0.50
		Blair, Michael E.	0.50
		Elward, Lucius P	0.50
		Parkinson, Jacquelyn R	0.50
	Nicollet MS	Armajani, Jonathan C	0.33
		Hansen, William C	0.33
		Mohr, Sydney M	0.33
		Orth, Steven D.	0.33
		Salad, Hawa D	0.50
		Sorensen, Brad	0.50
Math Tcr	Burnsville Alternative HS	Lotze, Timothy	1.00
		Mueller, Sarah K	1.00
	Eagle Ridge MS	Czapar, Ryan J	0.50
		Drutowski, Alison	0.50
		Grueneich, Janelle	0.50
		Isaacson, Melissa J	0.50
		Nelson, Michelle L	0.50
	Nicollet MS	Benson, Ross S	0.50
		Funches, Monique Roy	0.66
		Geddes, Richard W	0.33
		McNeil, Madeline P	0.50
		Philipsek, Megan K	0.50
		Van Hoorn, Kirsten	0.50
Phy Ed Tcr	Burnsville Alternative HS	Morrissey, Kevin P	1.00
Principal	Burnsville Alternative HS	Ronn, Kelly J	0.75
Science Tcr	Burnsville Alternative HS	Engelhardt, Angela C	1.00
		Pranschke, Stephanie T	0.20
		Soderholm, William Eric	1.00
Soc Stu Tcr	Burnsville Alternative HS	Bates, Daniel W	0.10
		Bergman, Anna T	0.50
		Hill, Amy	0.90
		Kirchner, Amy	1.00
		Simmons, Sean D	0.20

	Location Description	Full Name	FTE
Soc Stu Tcr	Virtual Academy Secondary	Simmons, Sean D	0.13
Youth Development/ALC Coord	Community Ed	Floback, Courtnee L	0.60
10030 - K-12 Nursing Hlth Serv			
EA Health	Gideon Pond Elementary	Stene, Barbara	0.91
	Harriet Bishop Elementary	Hansen, Sarah J	0.91
	Rahn Elementary	Gaddy, Keshia	0.91
	Sky Oaks Elementary	Luth, Donita	0.45
	Vista View Elementary	Luth, Donita	0.45
Nurse - LPN	Burnsville Alternative HS	Carlisano, Marta L	1.00
	Edward Neill Elementary	Wittenkeller, Jane E	0.93
Nurse - LSN	Burnsville HS	Beaulieu, Kourtney A	0.64
	District-wide	Bien, Bernadette L	0.60
	Eagle Ridge MS	Eilertson, Jane Ann	0.79
	Gideon Pond Elementary	Cozad, Patricia M	0.21
	Nicollet MS	Mjelleli, Emily L	0.80
		OPEN	1.00
	Rahn Elementary	Stinson, Katrina L	0.16
	Sky Oaks Elementary	Cozad, Patricia M	0.33
	Wm Byrne Elementary	Stinson, Katrina L	0.08
Nurse - RN	Burnsville HS	Robison, Kim A	0.85
	Hidden Valley Elementary	Dillon, Riley N	1.00
		Exley, Amanda	0.82
11020 - 9-12 Athletics			
Ace L4 Admin Asst/Specialist	Burnsville HS	Riggs, Jeanine L	1.00
Dir Activities	Burnsville HS	Paek, Guillaume J	1.00
12010 - F401 Fed Title I			
3rd GradeTcr	Hidden Valley Elementary	Taack, Gina	1.00
4th Grade Tcr	Hidden Valley Elementary	Grundstrom, Katie M	1.00
	Virtual Academy - Elementary	Viktora, Gabrielle E	0.50
5th Grade Tcr	Edward Neill Elementary	Jensen, Jason C	1.00
	Sky Oaks Elementary	Richards, Jesse	1.00
	Virtual Academy - Elementary	Viktora, Gabrielle E	0.50
Ace L3 Secretary	Diamondhead	Chamberland, Tausha	1.00
Ace L4 Admin Asst/Specialist	Diamondhead	De Leon, Angel M	0.50
Band Tcr	District-wide	OPEN	1.00
Counselor	Hidden Valley Elementary	Vendel, Kristin M	1.00
EA L2 Support	Sky Oaks Elementary	Solomon, Cassidy E	0.13
	Vista View Elementary	Cermak, Barbara L	0.16
	Wm Byrne Elementary	Engberg, Denise G	0.25
EA Level 3	Edward Neill Elementary	Kruger, Tara N	0.94
	Gideon Pond Elementary	Abdi, Rahima A	0.50
		Waters, Stacie	0.63
	Rahn Elementary	Gutierrez Beltran, Maria L	0.06
	Vista View Elementary	Tillman, Jack R	1.00
Family Liaison	Harriet Bishop Elementary	Wild, Priscila C	1.00
Kindergarten Tcr	Gideon Pond Elementary	Brace, Roxanna N	1.00
Learning Specialist	Harriet Bishop Elementary	Schafer, Kristy J	0.50

Staffing Detail by Budget Unit as of May 23, 2022

	Location Description	Full Name	FTE
Learning Specialist	Harriet Bishop Elementary	Schwalbe, Heather	1.00
	Rahn Elementary	Keuler, Lori J	0.75
	Vista View Elementary	Green, Kerianne Loran	0.63
	Wm Byrne Elementary	Knutson, Christine	1.00
Sisa Coordinator	Diamondhead	Fischer McDonald, Christine	0.49
		Howe, Jaimie K	0.80
Title 1 Tcr	St. John's	Pfeiffer, Donna M	0.40
TOSA	Diamondhead	Gehrke, Andrew R	0.20
12020 - F414 Fed Title II Part A			
Avid Coordinator	Burnsville HS	Christy, Danielle H	0.20
	Eagle Ridge MS	Thomas, Jessica	0.13
	Nicollet MS	Smalley, Amy C	0.13
ESL Coordinator	Diamondhead	Kreie Arago, Maria	0.25
Lang Arts Tcr	Burnsville HS	Connell, Paul J	0.20
Sisa Coordinator	Diamondhead	Fischer McDonald, Christine	0.49
		Lowe, Brandon L	1.00
TOSA	Diamondhead	Gehrke, Andrew R	0.80
12030 - F417 Fed Title III			
ESL Coordinator	Diamondhead	Kreie Arago, Maria	0.75
12040 - F433 Fed Title IV-A			
Behavior Analyst	District-wide	Czapar, Kelly N	0.10
		Ewert, Casey B	0.10
Lang Arts Tcr	Burnsville HS	Connell, Paul J	0.20
Sisa Coordinator	Diamondhead	Howe, Jaimie K	0.20
13010 - F335 Pro Pay (QComp)			
Continuous Improvement Coach	District-wide	Bane, Deanna S	1.00
		Coleman, Colleen M	1.00
		Hagen, Aimee E	1.00
		Nemeth, Heather	1.00
		Ness, Katie L	1.00
		Niffenegger, Kamala N	1.00
13020 - Integration Program			
Advanced Learning	Gideon Pond Elementary	Stalock, Sharron C	0.50
	Wm Byrne Elementary	Stalock, Sharron C	0.50
Avid Coordinator	Burnsville Alternative HS	Hill, Amy	0.10
	Burnsville HS	Christy, Danielle H	0.10
	Eagle Ridge MS	Thomas, Jessica	0.20
	Nicollet MS	Smalley, Amy C	0.20
Cultural Liaison	District-wide	Ali, Maryan H	1.00
		Bauer, Andrea C	1.00
		Gaston, Tommie	1.00
		Grant, Heidi A	1.00
		Kaahiye, Axmad	1.00
		Lopez, Mary T	1.00
		Omar, Abdulahi	1.00

	Location Description	Full Name	FTE		
Cultural Liaison	District-wide	Osman, Amal M	1.00		
		Quintana Nunez, Mariana	1.00		
		Torres, Hector R	1.00		
		Yasin, Muna I	1.00		
Dir Curriculum & Instruction	Diamondhead	Oftedahl, Imina P	0.25		
Social Worker	Burnsville HS	Hewett, Thomas	0.65		
		Morrissey, Michelle M	0.65		
		Eagle Ridge MS	Poliquin, Anne E	0.65	
		Gideon Pond Elementary	Khalif, Abdullahi M	0.65	
		Harriet Bishop Elementary	Koch, Rebecca M	0.65	
		Hidden Valley Elementary	Gauer-Kloos, Megan	0.65	
		Nicollet MS	Fahey, Kara J	0.65	
			Mains, Kristin E	0.65	
	Rahn Elementary	Keller, Katie	0.65		
	Sky Oaks Elementary	Bruns, Brittany G	0.65		
	Vista View Elementary	Lemke, Emily A	0.65		
	Wm Byrne Elementary	McDowell, Morgan	0.52		
	Specialist of American Indian	District-wide	Mousseau, Rebecca J	1.00	
	13030 - Compensatory Ed				
6th Grade Tcr	Eagle Ridge MS	Lewandowski, Megan J	0.50		
	Nicollet MS	Peterson, Christine K	0.83		
Advanced Learning	Harriet Bishop Elementary	Huber, Erin	0.50		
	Hidden Valley Elementary	Huber, Erin	0.50		
	Rahn Elementary	Podratz, Anne Marie	0.50		
	Vista View Elementary	Podratz, Anne Marie	0.50		
Avid Tcr	Burnsville HS	Christy, Danielle H	0.50		
		Davidson, Elizabeth A	0.20		
		Deutsch, Matt R	0.20		
		Hansen, Marie C	0.20		
		Johnson, Cory Charles	0.20		
		McDevitt, Paul David	0.20		
		Simmons, Sean D	0.20		
		Waller, Jennifer	0.20		
		Barnes, Monet M	1.00		
		Skoglund, Allison L	1.00		
		Counselor	Burnsville Alternative HS	Maidment, Lori	0.20
		Interventionist	Burnsville Alternative HS	Maidment, Lori	0.80
	Eagle Ridge MS	Day, Marlys L	1.00		
Lang Arts Tcr	Nicollet MS	Smolke, Angela S	0.67		
	Virtual Academy Secondary	Orth, Steven D.	0.17		
Math Tcr	Burnsville HS	Banitt, Justin	0.10		
		Harrod, Kim	0.20		
		Vogt, Kendra M	0.20		
		Reading Tcr	Burnsville HS	Holcombe, Sara J	0.20
Science Tcr	Burnsville HS	Holt, Clayton B	0.13		
		Huemoeller, Michael T	0.20		
14010 - Tech General					
Digital Learning Specialist	Edward Neill Elementary	Anderson, Bjorn Rs	0.50		

	Location Description	Full Name	FTE
Digital Learning Specialist	Gideon Pond Elementary	Knudsen, Julie A	0.75
	Harriet Bishop Elementary	Risteau, Joseph S	1.00
	Hidden Valley Elementary	Miller, Kaycie R	0.75
	Rahn Elementary	Christen, Lisa K.	0.25
		Knudsen, Julie A	0.25
	Sky Oaks Elementary	Christen, Lisa K.	0.75
	Virtual Academy - Elementary	OPEN	0.25
	Vista View Elementary	Anderson, Bjorn Rs	0.50
		Miller, Kaycie R	0.25
	Wm Byrne Elementary	Abrahamson, Jonathan	1.00
14020 - Tech Capital Projects			
Ace L4 Admin Asst/Specialist	Diamondhead	Lallier, Britney	1.00
Digital Learning Specialist	District-wide	Salmela, Kathryn	1.00
Dir Technology	Diamondhead	Gorton, Rachel	1.00
Tech Spec 1	Diamondhead	Abdiwahab, Mohamed S	1.00
		Meyer, Jessica M	1.00
		Stalock, Andrew R	1.00
		Mohamed, Hanad Y	1.00
Tech Spec 2	Diamondhead	Lund, Elliott J	1.00
		Rethlake-homolka, Pam	1.00
		Thomas, John S	1.00
		Webster, James A	1.00
Tech Spec 3	Diamondhead	Kopp, Elizabeth A	1.00
		Lund, Tim J	1.00
Tech Spec 4	Diamondhead	Weiler, Bob M	1.00
		Wolke, Drew D	1.00
15010 - Prog Development			
Ace L4 Admin Asst/Specialist	Diamondhead	De Leon, Angel M	0.50
15020 - Curriculum			
Dir Curriculum & Instruction	Diamondhead	Oftedahl, Imina P	0.75
Sisa Coordinator	Diamondhead	Lucius, Rachel H	1.00
16010 - Board of Education			
School Board	District-wide	Conner, Antoinette	1.00
		Said, Suad A	1.00
		Werb, Anna J	1.00
School Board - Chair	District-wide	Miller, Eric Charles	1.00
School Board - Clerk	District-wide	Hume, Michael S	1.00
School Board - Treasurer	District-wide	Alt, Abigail	1.00
School Board - Vice Chair	District-wide	Chester, Lesley A	1.00
16020 - Superintendent			
Exec Admin Assistant	Diamondhead	Kenney, Jami M	1.00
Superintendent	Diamondhead	Battle, Theresa F	1.00
16030 - Assist Superintendent			
Ace L4 Admin Asst/Specialist	Diamondhead	Kacmarynski, Kristine	0.50

	Location Description	Full Name	FTE
Asst Superintendent	Diamondhead	Gersich, Brian M	1.00
16040 - Human Resources			
Dir Human Resources	Diamondhead	Sovine, Stacey	1.00
Hr Benefits Specialist	Diamondhead	Kalash, Kelly J	1.00
Hr Coord	Diamondhead	Busker, Hailey M	1.00
Hr Employment Specialist	Diamondhead	Olson, Ariel R	1.00
Hr Labor Relations Mgr	Diamondhead	Demuth, Joy S	1.00
16050 - Business Services			
Ace L4 Admin Asst/Specialist	Diamondhead	Kacmarynski, Kristine	0.50
Dir Business	Diamondhead	Rider, Lisa K	1.00
16051 - Accounting & Finance			
Ace L4 Admin Asst/Specialist	Diamondhead	Kaisershot, Stacy L	1.00
		Wilson, Michele L	1.00
		Zellmer, Julie A	1.00
Compliance Coordinator	Diamondhead	Leake, Jarrod S	1.00
Dir Finance	Diamondhead	Dehne, Tyler	1.00
Fiscal Services Coordinator	Diamondhead	Ditter, Natalie L	1.00
Pyrl Supervisor	Diamondhead	Robasse, Christine M	1.00
16060 - Marketing Communications			
Communications Coordinator	Diamondhead	Steichen, Matthew J	1.00
Communications Specialist	Diamondhead	Lake, Lisa L	1.00
Dir Communications	Diamondhead	Tinklenberg, Aaron D	1.00
16070 - Student Registration			
Ace L3 Secretary	Diamondhead	Hardt, Annette	1.00
		Kaiser, Tanya J	1.00
Ace L4 Admin Asst/Specialist	Diamondhead	Petroskey, Kellie A	1.00
Student Systems Coordinator	Diamondhead	OPEN	1.00
17010 - VOLUNTARY PRE-SCHOOL			
CE Coordinator 2	Diamondhead	Cherne, Lori M	1.00
		Milinovich, Tracy	1.00
Edward Neill Elementary		Hirani, Misbah M	1.00
Gideon Pond Elementary		Schiffman, Suzanne	1.00
		Smith-Lossiah, Sharon Kay	1.00
Harriet Bishop Elementary		Derusha, Jessalynn	0.50
		Fandrich, Kari M	1.00
Hidden Valley Elementary		Rivers, Jessica L	1.00
		Tusa, Angela M	1.00
Rahn Elementary		Pettengill, Taylor M	1.00
		Watson, Melissa A	1.00
Sky Oaks Elementary		Dedomines, Jennifer L	1.00
		Santos, Miya D	1.00
Vista View Elementary		Rottjakob, Ronda K	1.00
Wm Byrne Elementary		Hanson, Virginia A	1.00
CE Program Associate	Community Ed	Abraha, Wubet A	0.75

Staffing Detail by Budget Unit as of May 23, 2022

	Location Description	Full Name	FTE
CE Program Associate	Community Ed	Amos, Susan K	1.00
		Monnens, Selena	0.88
		Sampers, Karen M	0.75
	Gideon Pond Elementary	Yusuf, Ubah	0.88
	Harriet Bishop Elementary	Sexton, Tracy M	0.45
	Hidden Valley Elementary	Rush, Diane	1.00
	Rahn Elementary	Burkart, Paula J	0.88
	Sky Oaks Elementary	Davis, Isaiah	1.00
CE Program Supervisor	Community Ed	Coulter, Elizabeth E	1.00
	Harriet Bishop Elementary	Sanborn, Nicholas	0.19
Early Learning Coordinator	Community Ed	Sampers, Cynthia	0.30
Sped Supervisor	Diamondhead	Cherry, Carolyn J	0.15
17011 - Elem Bldg Administrators			
Principal	Edward Neill Elementary	Bomsta, Lyle J	1.00
	Gideon Pond Elementary	Buchanan, Isis L	1.00
	Harriet Bishop Elementary	Essay, Kenneth P	1.00
	Hidden Valley Elementary	Black, Kristine C	1.00
	Rahn Elementary	Robb, Brad E	1.00
	Sky Oaks Elementary	Brandner, Renee	1.00
	Virtual Academy - Elementary	Pohl, Angie J	0.25
	Vista View Elementary	Pohl, Angie J	0.75
	Wm Byrne Elementary	Bonneville, Jon G	1.00
17012 - Elem Bldg Clerical			
Ace L3 Secretary	Hidden Valley Elementary	Najera Vazquez, Martha E	1.00
Ace L4 Admin Asst/Specialist	Edward Neill Elementary	Stickle, Carolyn E	1.00
	Gideon Pond Elementary	Olsen-Dickhausen, Sarah J	1.00
	Harriet Bishop Elementary	Hinman, Jennifer J	1.00
	Hidden Valley Elementary	Hreha, Kyle J	1.00
	Rahn Elementary	Crosbie, Cindy	1.00
	Sky Oaks Elementary	Halvorson Peralta, Nancy E	1.00
	Vista View Elementary	Berra, Angie Marie	1.00
	Wm Byrne Elementary	Mcclellan, Melissa E	1.00
17013 - Elem Bldg Ed Assistants			
EA L2 Support	Edward Neill Elementary	OPEN	0.41
		Polding, Molly A	0.47
		Rosenberger, Rose M	0.88
	Gideon Pond Elementary	Abdi, Rahima A	0.50
		Butorac, Melanie A	0.25
		Kump, Jolene	1.00
	Harriet Bishop Elementary	Becker, Sarah J	0.19
		Liyanage, Melanie	0.69
		Mcconnell, Diane	0.50
		Siddorn, Angela G	0.63
	Hidden Valley Elementary	Nelson, Jeremy Tk	0.25
		OPEN	0.63
		Somerville, Raha A	0.38
	Rahn Elementary	Christman, Amber S	0.31

Staffing Detail by Budget Unit as of May 23, 2022

	Location Description	Full Name	FTE	
EA L2 Support	Rahn Elementary	Mosley, Julie G	1.00	
	Sky Oaks Elementary	Berge, Kristy K	0.31	
		Haroon, Hajir S	0.63	
		Jama, Safiyo N	0.31	
		Solomon, Cassidy E	0.19	
		Yusuf, Kali M	1.00	
		Vista View Elementary	Cermak, Barbara L	0.25
		Gilbertson, Sherry A	0.69	
		Schonewill, Jamie	0.69	
	Wm Byrne Elementary	Ahmed, Sahra G	0.31	
		Cull, Margaret R	0.91	
		Duran, Lindsey M	0.38	
		OPEN	0.09	
		Vervais, Elizabeth	0.31	
17021 - Sec Bldg Administrators				
POSA	Nicollet MS	Bellmont, Chris	1.00	
Principal	Burnsville HS	Helke, David M	1.00	
	Eagle Ridge MS	Selim, Mohamed A	1.00	
	Virtual Academy Secondary	Ronn, Kelly J	0.25	
	Principal Asst	Burnsville HS	Becquer, Frances	1.00
		Braspenick, Cherie	1.00	
		Lepper, Jay C	1.00	
		Noble, Sarah J	1.00	
		Heim, Bill V	1.00	
Eagle Ridge MS				
Nicollet MS		Blaylark, Eddie D	1.00	
17022 - Sec Bldg Clerical				
Ace L3 Secretary	Burnsville HS	Cecka, Nanette	1.00	
		Funk, Ann E	1.00	
		Moberg, Carlene	1.00	
		Plomski, Marci	1.00	
		Scherer, Deb M	1.00	
		Thornton, Jenifer A	1.00	
	Eagle Ridge MS	Evans-Vorhies, Maryann C	1.00	
		Felton, Michelle M.	1.00	
	Nicollet MS	Olson, Diane B	1.00	
		Paul, Tara	1.00	
	Ace L4 Admin Asst/Specialist	Burnsville HS	Cenci, Barbara	1.00
			Katzmarek, Abigail S	1.00
Eagle Ridge MS		Scalzo, Kristin	1.00	
Nicollet MS		O'Hara Stuart, Erin	1.00	
Registrar	Burnsville HS	Westerlund, Danette R	1.00	
17027 - DEC Clerical				
Ace L2 Clerk	Diamondhead	Lau, Guek Yong	1.00	
19010 - OP Custodial				
Custodian - Level 1	Burnsville HS	Jacobson, Michael J	1.00	
		Jimenez, David M	1.00	

Staffing Detail by Budget Unit as of May 23, 2022

	Location Description	Full Name	FTE
Custodian - Level 1	Burnsville HS	Linder, Anthony J	1.00
		Martinez, Annette	1.00
		Mcdonald, David	1.00
		Molina, Luis A	1.00
		OPEN	1.00
		Orellana, Laura I	1.00
		Schwanke, Craig A	1.00
		Toeller, John F.	1.00
		Wick, Darryl	1.00
	Diamondhead	Abbott, Mark M	1.00
		Alvarado Robles, Luis	1.00
		Dotzler, Brenda L	1.00
		Graupmann, David A	1.00
	District-wide	Anderson, Sean M	1.00
		Davila, Guillermo D	1.00
		OPEN	1.00
		Vertein, James	1.00
		Wick, Kaleb	1.00
	Eagle Ridge MS	Arreola, Bertha A	1.00
		Leon, Steven F	1.00
		Ly, Ty V	1.00
		Sahli, Teresea	1.00
	ECSE	James, Marcus C	0.50
		Lopez, Joseph D	1.00
	Edward Neill Elementary	Alvarado, Mary	1.00
		Molina, Angel	0.50
	Gideon Pond Elementary	Fitzgerald, Elizabeth	1.00
		Ohlhauser, Connor C	0.50
	Harriet Bishop Elementary	Robasse, Charles W	1.00
		Spencer, Tandelyn T	1.00
	Hidden Valley Elementary	Alvarado, Ernesto	1.00
		Sullivan, Geraldine E	1.00
	Nicollet MS	Kiehn, Jean M	1.00
		Mathys, Frederic G	1.00
		O'leary, Daniel L	1.00
	Rahn Elementary	Needham, Timothy	1.00
		Ohlhauser, Connor C	0.50
	Sky Oaks Elementary	Kinyon, Terry R	1.00
	Vista View Elementary	Molina, Angel	0.50
		Morales, Manuela	1.00
	Wm Byrne Elementary	James, Marcus C	0.50
		OPEN	1.00
Custodian - Level 2	Burnsville HS	Alvarado, Angel	1.00
		Gibbons, Patrick M	1.00
		Lundberg-Schmidt, Pamela M	1.00
		Mauser, Benjamin	1.00
		Wendorf, Eric S	1.00
	District-wide	Johnson, Mark E	1.00
		Johnson, Michael A	1.00
		Wollersheim, Christian P	1.00

	Location Description	Full Name	FTE
Custodian - Level 2	Eagle Ridge MS	Johnson, Nicholas A	1.00
	Nicollet MS	Teske, Jeffrey J	1.00
Custodian - Level 3	Burnsville HS	Morgan, Julie C	1.00
		Sahli, Jonathan C	1.00
	Diamondhead	Glende, Mark	1.00
		Thurber, Laurie	1.00
	Eagle Ridge MS	Johnson, Glenn A.	1.00
	ECSE	Dykstra, Bryan G.	1.00
	Edward Neill Elementary	Reimers, James F	1.00
	Gideon Pond Elementary	Gorzycki, Mark	1.00
	Harriet Bishop Elementary	Martinez, Robert V	1.00
	Hidden Valley Elementary	Nelson, Kirk A	1.00
	Metcalf MS	Johnson, Brian J	1.00
	Nicollet MS	Schmidt, Brent G	1.00
	Rahn Elementary	Jensen, Bryan J	1.00
	Sky Oaks Elementary	Kaisershot, Troy M	1.00
	Vista View Elementary	Gomez, Oscar A	1.00
	Wm Byrne Elementary	Sather, Derek D	1.00
Dir Operations	Diamondhead	Lake, David	0.40
Ops Supervisor	District-wide	Wolfram, Michael	1.00
		Wurdeman, Scott	1.00
19020 - OP Bldg Main & Grounds			
Custodian - Level 2	District-wide	Anderson, John Charles	1.00
		Chantara, Thomas Khamsing	0.50
Custodian - Level 4	District-wide	Gilbertson, Dale	1.00
		Henderson, Sean M	1.00
19030 - H & S/ADA Compliance			
Ace L4 Admin Asst/Specialist	Diamondhead	Maro, Julie A	1.00
Dir Operations	Diamondhead	Lake, David	0.60
Ops Supervisor	District-wide	Powers, Scott D	1.00
19041 - Facilities Rental			
Facilities Coordinator	Diamondhead	Hinrichsen, Kyle	1.00
19050 - Purchasing/Warehouse			
Custodian - Level 2	District-wide	Chantara, Thomas Khamsing	0.50
Custodian - Level 4	District-wide	Hadac, William	1.00
21100 - Emergency Relief Aid			
1st Grade Tcr	District-wide	Akers, Lauren A	1.00
2nd Grade Tcr	District-wide	Lobben, Angela	1.00
3rd GradeTcr	Virtual Academy - Elementary	Tomala, Crystal M	1.00
4th Grade Tcr	District-wide	Katchmark, Laura E	1.00
5th Grade Tcr	District-wide	VanHorn, Alexander W	1.00
Ace L4 Admin Asst/Specialist	District-wide	OPEN	1.00
Behavior Analyst	District-wide	OPEN	1.00
Cultural Liaison	District-wide	Abdullahi, Sahro	1.00
		Ruiz, Cynthia	1.00

Staffing Detail by Budget Unit as of May 23, 2022

	Location Description	Full Name	FTE
EA Level 3	District-wide	OPEN	2.81
	Gideon Pond Elementary	Barsug, Hudayfi M	0.94
	Harriet Bishop Elementary	Oshiro, Karen M	0.94
	Rahn Elementary	Gutierrez Beltran, Maria L	0.94
	Sky Oaks Elementary	Abtow, Anab A	0.94
	Wm Byrne Elementary	Johnson, Megann M	0.91
Interventionist	District-wide	OPEN	5.00
Math Tcr	Burnsville HS	Brevik, Lori A	1.00
	Eagle Ridge MS	Schmidt-boyles, Dawn	1.00
	Nicollet MS	Notch, Samantha J	1.00
Soc Stu Tcr	Burnsville HS	Amegbleame, Coudjo	1.00
Social Worker	District-wide	OPEN	1.00
Tech Spec 1	Diamondhead	Tarnofsky, John J	1.00
SpEd & Federal Funds Coord	District-wide	OPEN	1.00

Staff Salary and Benefits by Bargaining Group

General Fund Bargaining Group	Sum of FTE (Full-Time Equivalent)	Sum of Salary	Sum of Benefits	Total Salary + Benefits	% of Total
Clerical	43.00	\$ 2,191,546	\$ 976,699	\$ 3,168,246	3.11%
Confidential	6.00	\$ 440,800	\$ 179,219	\$ 620,019	0.61%
Custodial	72.00	\$ 3,896,529	\$ 1,575,280	\$ 5,471,809	5.37%
District Wide	8.65	\$ 1,123,628	\$ 394,232	\$ 1,517,860	1.49%
Educational Asst	161.56	\$ 5,059,205	\$ 3,184,887	\$ 8,244,092	8.09%
Info Tech Specialists	13.00	\$ 781,455	\$ 322,686	\$ 1,104,141	1.08%
Operations	3.00	\$ 233,640	\$ 75,599	\$ 309,239	0.30%
Principals	18.00	\$ 2,620,750	\$ 890,034	\$ 3,510,784	3.45%
Superintendent	1.00	\$ 195,760	\$ 59,933	\$ 255,693	0.25%
Teachers	602.28	\$ 49,481,315	\$ 21,416,127	\$ 70,897,442	69.58%
Unaffiliated	50.30	\$ 3,648,622	\$ 1,601,296	\$ 5,249,918	5.15%
VPK / CE	25.21	\$ 1,169,990	\$ 378,742	\$ 1,548,732	1.52%
Grand Total	1,004.00	\$ 70,843,239	\$ 31,054,734	\$ 101,897,973	100%

Burnsville-Eagan-Savage District #191 Bargaining Unit Descriptions

Below are definitions of the categories from which all of our Human Resource Assignments within the General Fund are derived. Close to 80% of the total general fund budget is made up of Salary and Benefits, including hourly assignments, from these groups within the General Fund.

Clerical refer to positions that fall under the **Association of Clerical Employees** collective bargaining agreement which are expected to complete clerical tasks as assigned.

"Confidential employee" means an employee who as part of the employee's job duties: (1) is required to access and use labor relations information as that term is defined in section [13.37, subdivision 1](#), paragraph (c) *"Labor relations information" means management positions on economic and noneconomic items that have not been presented during the collective bargaining process or interest arbitration, including information specifically collected or created to prepare the management position.*"; or
(2) actively participates in the meeting and negotiating on behalf of the public employer.

Custodial refer to positions that fall under the **Service Employees International Union Local 284 - Custodial Employees** which are expected to complete custodial tasks as assigned.

District Wide - Districtwide Administrators Association includes the following positions whose roles vary depending upon their job description (note some of these positions are funded outside of the General Fund yet are included within this category) :

- Director of Curriculum, Instruction, and Student Support Services
- Director of Individualized Student Services
- Director of Operations, Properties, and Transportation
- Director of Community Education (funded by Fund 04)
- Director of Strategic Partnerships and Pathways
- Director of Activities and Athletics
- Director of Food Services (funded by Fund 02)
- Special Education Supervisor(s)
- Adult Basic Education Coordinator (funded by Fund 04)

Educational Asst - refer to positions that fall under the **Burnsville Association of Educational Assistants** collective bargaining agreement which are expected to complete tasks as assigned in the areas of support, health, media and special education.

Info Tech Specialists - refer to positions that fall under the **Information Technology Specialists** collective bargaining agreement which are expected to complete tasks as assigned to either level of Tech Spec 1, 2, 3, or 4.

Operations Supervisors - refer to positions that fall under the **Operations and Maintenance Supervisors** collective bargaining agreement which are expected to complete tasks as assigned for Operations Supervisors.

Principals - refer to positions that fall under the **Burnsville Principals Association** collective bargaining agreement which are expected to complete tasks as assigned for their assigned level of either Associate or Principal at Elementary, Middle or Senior High levels.

School Board - elected officials comprising the **ISD 191 School Board of Directors**.

Superintendent - Individual who leads ISD 191 as per job description and contract with School Board.

Teachers - refer to positions that fall under the **Burnsville Education Association** collective bargaining agreement which are expected to complete tasks as assigned for their position as a licensed teaching personnel as defined in the Public Employment Labor Relations Act (PELRA).

Unaffiliated Employees are positions that do not have a "Community of Interest" with established bargaining units within the district. These positions are At-Will and fall under Terms and Conditions of Employment verses a negotiated agreement.

Revised 3/5/2021

General Fund Budget Comparative Summary

	Actual Results 2020-21	Adopted Budget 2021-22	Revised Budget 2021-22	Adopted Budget 2022-23
Total Beginning Fund Balance	\$ 20,326,027	\$ 21,483,321	\$ 29,521,880	\$ 29,371,898
Revenues	129,973,192	123,498,369	126,417,450	125,658,061
Federal Relief Revenues for current costs	4,673,195	7,187,245	9,468,267	3,400,000
Federal Relief Revenues for new costs				6,270,499
Expenditures	120,777,339	132,480,192	130,875,664	127,469,041
Federal Relief Expenditures for new costs	4,673,195	3,287,245	5,160,035	9,670,499
Variance (Revenues - Expenditures)	9,195,853	(5,081,823)	(149,982)	(1,810,980)
Total Ending Fund Balance	\$ 29,521,880	\$ 16,401,498	\$ 29,371,898	\$ 27,560,918
Breakdown of Fund Balance Categories				
Nonspendable	\$ 382,338	\$ 367,587	\$ 382,338	\$ 382,338
Restricted	9,020,782	5,476,553	8,261,908	8,637,897
Committed	1,849,491	1,784,069	1,538,385	1,168,634
Assigned	5,081,823	-	1,810,980	-
Unassigned	13,187,446	8,773,289	17,378,287	17,372,049
Total Ending Fund Balance	\$ 29,521,880	\$ 16,401,498	\$ 29,371,898	\$ 27,560,918
Unassigned Fund Balance %	10.51%	6.46%	12.77%	12.67%
Unassigned Fund Balance % if no Assigned			14.11%	

ISD 191 Federal Relief Funds Summary

As of May 16, 2022

American Rescue Plan (ARP ESSER III) Finance Code 160

<p>ISD 191 Allocations: \$ 12,913,225.06 Remaining: \$ 12,913,225.06 Spending Timeline: 7/1/2020-9/30/2024</p> <p>FY23:\$6,345,813 FY24:\$6,567,412.06</p>	<p>Spending Parameters: One plan 2 finance codes</p> <ul style="list-style-type: none"> ❖ Help meet a wide range of needs arising from the COVID-19 pandemic, including reopening schools safely, sustaining their safe operation, and addressing students' social emotional, mental health and academic needs resulting from the pandemic ❖ Meaningful Stakeholder Engagement <ul style="list-style-type: none"> ❖ State Education Priorities: Full Service Community Schools, Community Partnerships, Neighborhood Programs, Expand Access to Tutoring, multi-tiered system of supports (MTSS), Student Support Personnel, Expand or Add Vocational or Life Skills programming for students receiving Special Education Services, Expand access to School Readiness, Kindergarten Entry Profile, Grow Your Own Expansion/Teacher Mentoring Program/Educator Career Pathways, Family Engagement Model, Expand Language Access, Expand Rigorous Coursework by demographics and geography, Staffing for smaller class sizes and/or staff for interventions or enrichment, Ethnic Studies and Indigenous Education, Hands-on Learning Opportunities/Field Trips, Out of School Time Learning Opportunities <p>ISD 191 Expenditures:</p> <ul style="list-style-type: none"> ❖ Expand tutoring and mentorship ❖ Sustain voluntary Prekindergarten programming ❖ Translation Cultural Liaisons ❖ Additional teaching staff for specific grades including virtual academy ❖ Credit recovery instructors at BHS ❖ Math interventionists at middle level ❖ Field trips, when and as possible, particularly for those historically underserved ❖ Professional development on Kindergarten readiness and transition ❖ Health needs: physical, mental, social and emotional ❖ Cleaning supplies and operational equipment ❖ Chemical health counseling services ❖ Transportation ❖ Repair and purchase of student devices
---	--

American Rescue Plan (ARP ESSER III) Finance Code 161

<p>ISD 191 Allocations: \$ 3,228,306.26 Remaining: \$ 3,228,306.26 Spending Timeline: 7/1/2020-9/30/2024</p> <p>FY23:\$1,614,153 FY24:\$1,614,153.26</p>	<p>Spending Parameters: One plan 2 finance codes</p> <ul style="list-style-type: none"> ❖ Must reserve at least 20% of funds to address learning loss through the implementation of evidence-based interventions ❖ Summer learning or enrichment, comprehensive after school programs, extended day programs and/or extended year programs <p>ISD 191 Expenditures:</p> <ul style="list-style-type: none"> ❖ Out of school time; After school; Extended Day; and Extend Year <ul style="list-style-type: none"> ➢ Hands on learning opportunities, including field trips ➢ Community Partnerships ➢ Expand Language Access
---	--

Expanded Summer Learning Program Finance Code 163

<p>ISD 191 Allocations: \$ 825,200 sent \$ 206,300</p> <p>Remaining: \$ 89,244 until final MARSS allocation</p> <p>Spending Timeline: 5/19/2021-9/30/2022</p> <p>FY23 = \$1,545,163.40</p>	<p>Spending Parameters:</p> <ul style="list-style-type: none"> ❖ Extended School Year (ESY) services, Community Education offerings and child care services will not qualify to generate these funds. ❖ Can only be spent on Summer Programs with state-approved alternative programs (SAAP) student attendance and membership hours reported in the Fall Minnesota Automated Reporting Student System (MARSS) file. ❖ Additional staff (teachers, support staff, parent liaisons, etc.) ❖ Increased transportation ❖ Longer day or increased number of days <p>ISD 191 Expenditures</p> <ul style="list-style-type: none"> ❖ In person Summer School programming generating seat time ❖ Three week preschool summer programming, else ESSER III 20% ❖ All summer 2022 programming
---	--

Summer Preschool Funding Finance Code 165

<p>ISD 191 Allocations: \$ 76,800</p> <p>Remaining: \$ 76,800</p> <p>Spending Timeline: 5/19/2021-9/30/2022</p> <p>FY23 = \$148,000</p>	<p>Spending Parameters:</p> <ul style="list-style-type: none"> ❖ For children age 4 or 5 on 9/1/2020 who have not yet attended kindergarten. ❖ For every \$ 4,800 allocated in funding, programs must serve at least one child. ❖ Support tuition, teachers and staff, transportation, food service, interpreter or multilingual support costs, mental health consultants and inclusion specialists, materials/consumables, and field trip expenses. ❖ Priority to children: <ul style="list-style-type: none"> ➢ In foster care, under child protection, experiencing homelessness, tribally enrolled or of teenage parents. ➢ At risk for or currently receiving support and services such as Early Childhood Special Education (ECSE) or English Learners. ➢ Children qualify for free or reduced-priced lunch or other public assistance programs that demonstrate a household income of 185 percent or less of the federal poverty guidelines. ❖ Program must offer a minimum of 100 instructional hours between 6/15/21 and the first day of kindergarten programming. ❖ Must submit final report by 10/1/2021 with enrollment details. <p>ISD 191 Expenditures</p> <ul style="list-style-type: none"> ❖ Six week preschool summer 2021 and 2022 programming <ul style="list-style-type: none"> ➢ Teachers and Assistants ➢ Materials and Supplies ➢ Transportation ➢ Transportation ➢ Custodial and Food and Nutrition support
--	--

ESSER III 5% Learning Recovery Applications Finance Code 169

ISD 191 Allocations: \$ 82,661 Remaining: \$ 82,661 Spending Timeline: FY22:\$47,661 FY23:\$35,000	Spending Parameters: <ul style="list-style-type: none">❖ Address learning recovery in response to the impact of lost instructional time by implementing supplemental interventions focused on supporting historically underserved students❖ Priority will be given to those receiving special education services, those who have missed the most in-person instruction during the 2019-20 and 2020-21 school years, and those who did not consistently participate in remote instruction when offered during school building closures ISD 191 Expenditures <ul style="list-style-type: none">❖ Social emotional learning support❖ Tutoring contracted services
---	---

Pandemic Enrollment Loss Funding Finance Code 171

ISD 191 Allocations: \$ 621,846 Remaining: \$ 621,846 Spending Timeline: FY22:\$491,376 FY23:\$130,470	Spending Parameters: <ul style="list-style-type: none">❖ Revenue to offset the financial impact due to the loss of enrollment from fall of 2020 to fall of 2021 ISD 191 Expenditures <ul style="list-style-type: none">❖ To be determined based on needs met by ESSER II funds and lesser Compensatory
---	---